

Product datasheet for **TA338113**

LXR beta (NR1H2) Rabbit Polyclonal Antibody

Product data:

Product Type:	Primary Antibodies
Applications:	WB
Recommended Dilution:	WB
Reactivity:	Human
Host:	Rabbit
Isotype:	IgG
Clonality:	Polyclonal
Immunogen:	The immunogen for anti-NR1H2 antibody: synthetic peptide directed towards the middle region of human NR1H2. Synthetic peptide located within the following region: MIQQLVAAQLQCNKRFSFDQPKVTPWPLGADPQSRDARQQRFAHFTELA
Formulation:	Liquid. Purified antibody supplied in 1x PBS buffer with 0.09% (w/v) sodium azide and 2% sucrose. <i>Note that this product is shipped as lyophilized powder to China customers.</i>
Purification:	Protein A purified
Conjugation:	Unconjugated
Storage:	Store at -20°C as received.
Stability:	Stable for 12 months from date of receipt.
Predicted Protein Size:	51 kDa
Gene Name:	nuclear receptor subfamily 1 group H member 2
Database Link:	NP_009052 Entrez Gene 7376 Human P55055



[View online »](#)

Background:

The liver X receptors, LXRA (NR1H3; MIM 602423) and LXRβ, form a subfamily of the nuclear receptor superfamily and are key regulators of macrophage function, controlling transcriptional programs involved in lipid homeostasis and inflammation. The inducible LXRA is highly expressed in liver, adrenal gland, intestine, adipose tissue, macrophages, lung, and kidney, whereas LXRβ is ubiquitously expressed. Ligand-activated LXRs form obligate heterodimers with retinoid X receptors (RXRs; see MIM 180245) and regulate expression of target genes containing LXR response elements (summary by Korf et al., 2009 [PubMed 19436111]). [supplied by OMIM, Jan 2010]. Transcript Variant: This variant (1) represents the longer transcript and encodes the longer isoform (1). Publication Note: This RefSeq record includes a subset of the publications that are available for this gene. Please see the Gene record to access additional publications. ##Evidence-Data-START## Transcript exon combination :: BC047750.2, U07132.1 [ECO:0000332] RNAseq introns :: single sample supports all introns ERS025081, ERS025082 [ECO:0000348] ##Evidence-Data-END## COMPLETENESS: complete on the 3' end.

Synonyms:

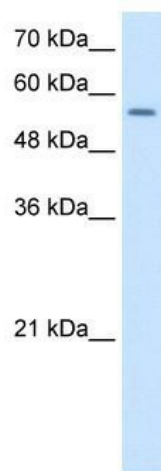
LXR-b; LXRβ; NER; NER-I; RIP15; UNR

Note:

Immunogen Sequence Homology: Dog: 100%; Pig: 100%; Rat: 100%; Horse: 100%; Human: 100%; Mouse: 100%; Bovine: 100%; Rabbit: 100%; Guinea pig: 100%

Protein Families:

Druggable Genome, Nuclear Hormone Receptor, Transcription Factors

Product images:

WB Suggested Anti-NR1H2 Antibody Titration:
1.25 ug/ml; Positive Control: HepG2 cell lysate