

## Product datasheet for **TA338111**

### ZNF258 (ZMYM6) Rabbit Polyclonal Antibody

#### Product data:

Product Type:	Primary Antibodies
Applications:	IHC, WB
Recommended Dilution:	WB, IHC
Reactivity:	Human
Host:	Rabbit
Isotype:	IgG
Clonality:	Polyclonal
Immunogen:	The immunogen for anti-ZNF258 antibody: synthetic peptide directed towards the middle region of human ZNF258. Synthetic peptide located within the following region: TPVITSVMSLAKIPATLSTGNTNSVLKGAVTKEAAKIIQDESTQEDAMKF
Formulation:	Liquid. Purified antibody supplied in 1x PBS buffer with 0.09% (w/v) sodium azide and 2% sucrose. <i>Note that this product is shipped as lyophilized powder to China customers.</i>
Purification:	Affinity Purified
Conjugation:	Unconjugated
Storage:	Store at -20°C as received.
Stability:	Stable for 12 months from date of receipt.
Predicted Protein Size:	79 kDa
Gene Name:	zinc finger MYM-type containing 6
Database Link:	<a href="#">NP_009098</a> <a href="#">Entrez Gene 9204 Human</a> <a href="#">O95789</a>
Background:	ZNF258 is part of a novel, putative, zinc-binding motif (MYM) family which encodes proteins that maintain the repeats of the MYM motif.
Synonyms:	Buster2; MYM; ZBED7; ZNF198L4; ZNF258
Note:	Immunogen Sequence Homology: Human: 100%; Dog: 91%; Rabbit: 85%; Horse: 79%
Protein Families:	Transcription Factors

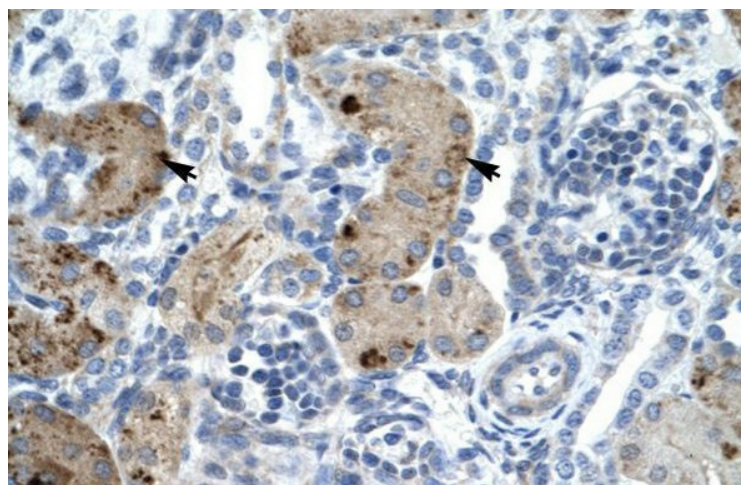


[View online »](#)

## Product images:



WB Suggested Anti-ZNF258 Antibody Titration: 0.2-1 ug/ml; ELISA Titer: 1:62500; Positive Control: Jurkat cell lysate There is BioGPS gene expression data showing that ZMYM6 is expressed in Jurkat



Human kidney