

Product datasheet for **TA338110**

Trehalase (TREH) Rabbit Polyclonal Antibody

Product data:

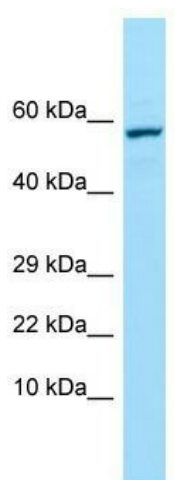
Product Type:	Primary Antibodies
Applications:	WB
Recommended Dilution:	WB
Reactivity:	Human
Host:	Rabbit
Isotype:	IgG
Clonality:	Polyclonal
Immunogen:	The immunogen for anti-TREH antibody is: synthetic peptide directed towards the middle region of Human TREH. Synthetic peptide located within the following region: NYLLNRYYPYGGPRPESYSKDVELADTLPEGDREALWAEKAGAESGWD
Formulation:	Liquid. Purified antibody supplied in 1x PBS buffer with 0.09% (w/v) sodium azide and 2% sucrose. <i>Note that this product is shipped as lyophilized powder to China customers.</i>
Purification:	Affinity Purified
Conjugation:	Unconjugated
Storage:	Store at -20°C as received.
Stability:	Stable for 12 months from date of receipt.
Predicted Protein Size:	60 kDa
Gene Name:	trehalase
Database Link:	NP_009111 Entrez Gene 11181 Human O43280
Background:	This gene encodes an enzyme that hydrolyses trehalose, a disaccharide formed from two glucose molecules found mainly in fungi, plants, and insects. A partial duplication of this gene is located adjacent to this locus on chromosome 11.
Synonyms:	TRE; TREA
Note:	Immunogen Sequence Homology: Human: 100%; Dog: 93%; Pig: 93%; Rat: 93%; Horse: 93%; Bovine: 93%; Rabbit: 93%; Guinea pig: 93%; Zebrafish: 92%; Mouse: 86%



[View online »](#)

Protein Pathways: Starch and sucrose metabolism

Product images:



WB Suggested Anti-TREH Antibody; Titration: 1.0 ug/ml; Positive Control: Hela Whole Cell