

Product datasheet for **TA338107**

SHOC2 Rabbit Polyclonal Antibody

Product data:

Product Type:	Primary Antibodies
Applications:	WB
Recommended Dilution:	WB
Reactivity:	Human
Host:	Rabbit
Isotype:	IgG
Clonality:	Polyclonal
Immunogen:	The immunogen for anti-SHOC2 antibody is: synthetic peptide directed towards the N-terminal region of Human SHOC2. Synthetic peptide located within the following region: NPAPGTRKKSSNAEVIKELNKREENSMRLDLSKRSIHILPSSIKELTQL
Formulation:	Liquid. Purified antibody supplied in 1x PBS buffer with 0.09% (w/v) sodium azide and 2% sucrose. <i>Note that this product is shipped as lyophilized powder to China customers.</i>
Purification:	Affinity Purified
Conjugation:	Unconjugated
Storage:	Store at -20°C as received.
Stability:	Stable for 12 months from date of receipt.
Predicted Protein Size:	58 kDa
Gene Name:	SHOC2 leucine-rich repeat scaffold protein
Database Link:	NP_031399 Entrez Gene 8036 Human Q9UQ13
Background:	This gene encodes a protein that consists almost entirely of leucine-rich repeats, a domain implicated in protein-protein interactions. The protein may function as a scaffold linking RAS to downstream signal transducers in the RAS/ERK MAP kinase signaling cascade. Mutations in this gene have been associated with Noonan-like syndrome with loose anagen hair.
Synonyms:	SIAA0862; SOC2; SUR8

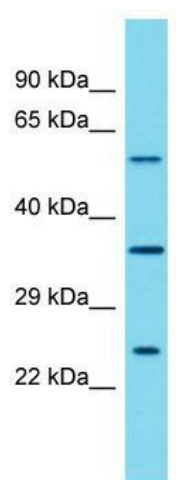


[View online »](#)

Note: Immunogen Sequence Homology: Dog: 100%; Pig: 100%; Horse: 100%; Human: 100%; Mouse: 100%; Bovine: 100%; Rabbit: 100%; Guinea pig: 100%; Rat: 93%; Zebrafish: 93%

Protein Families: Druggable Genome

Product images:



Host: Rabbit; Target Name: SHOC2; Sample Tissue: Fetal Kidney lysates; Antibody Dilution: 1.0 ug/ml