

## Product datasheet for **TA338105**

### AHA1 (AHSA1) Rabbit Polyclonal Antibody

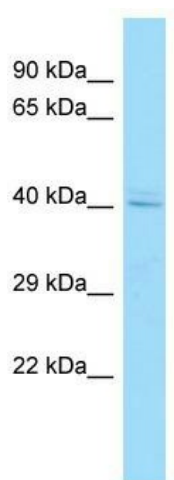
#### Product data:

Product Type:	Primary Antibodies
Applications:	WB
Recommended Dilution:	WB
Reactivity:	Human
Host:	Rabbit
Isotype:	IgG
Clonality:	Polyclonal
Immunogen:	The immunogen for anti-AHSA1 antibody is: synthetic peptide directed towards the C-terminal region of Human AHSA1. Synthetic peptide located within the following region: VMKWRFKSWPEGHFATITLTFIDKNGETELCMEGRGIPAPEEERTRQGWQ
Formulation:	Liquid. Purified antibody supplied in 1x PBS buffer with 0.09% (w/v) sodium azide and 2% sucrose. <i>Note that this product is shipped as lyophilized powder to China customers.</i>
Purification:	Affinity Purified
Conjugation:	Unconjugated
Storage:	Store at -20°C as received.
Stability:	Stable for 12 months from date of receipt.
Predicted Protein Size:	38 kDa
Gene Name:	activator of Hsp90 ATPase activity 1
Database Link:	<a href="#">NP_036243</a> <a href="#">Entrez Gene 10598 Human O95433</a>
Background:	AHSA1 is a cochaperone that stimulates HSP90 ATPase activity. AHSA1 may affect a step in the endoplasmic reticulum to Golgi trafficking.
Synonyms:	AHA1; C14orf3; p38
Note:	Immunogen Sequence Homology: Dog: 100%; Pig: 100%; Rat: 100%; Horse: 100%; Human: 100%; Mouse: 100%; Bovine: 100%; Rabbit: 100%; Guinea pig: 100%



[View online »](#)

## Product images:



WB Suggested Anti-AHSA1 Antibody; Titration: 1.0 ug/ml; Positive Control: MCF7 Whole Cell AHSA1 is supported by BioGPS gene expression data to be expressed in MCF7