

Product datasheet for **TA338103**

LILRA4 Rabbit Polyclonal Antibody

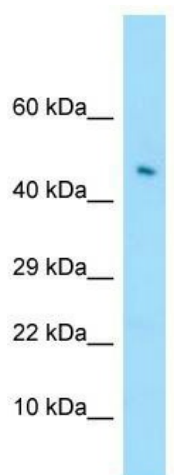
Product data:

Product Type:	Primary Antibodies
Applications:	WB
Recommended Dilution:	WB
Reactivity:	Human
Host:	Rabbit
Isotype:	IgG
Clonality:	Polyclonal
Immunogen:	The immunogen for anti-LILRA4 antibody is: synthetic peptide directed towards the C-terminal region of Human LILRA4. Synthetic peptide located within the following region: ATETLNPAQKKSDSKTAPHLQDYTVENLIRMGVAGLVLLFLGILLFEAQH
Formulation:	Liquid. Purified antibody supplied in 1x PBS buffer with 0.09% (w/v) sodium azide and 2% sucrose. <i>Note that this product is shipped as lyophilized powder to China customers.</i>
Purification:	Affinity Purified
Conjugation:	Unconjugated
Storage:	Store at -20°C as received.
Stability:	Stable for 12 months from date of receipt.
Predicted Protein Size:	50 kDa
Gene Name:	leukocyte immunoglobulin like receptor A4
Database Link:	NP_036408 Entrez Gene 23547 Human P59901
Background:	This gene encodes an immunoglobulin-like cell surface protein preferentially expressed in plasmacytoid dendritic cells (PDCs). This gene is highly expressed in PDCs, and is found to be rapidly down-regulated by interleukin 3 (IL3). This gene is one of the 19 highly related genes that form a leukocyte receptor gene cluster (LRC) at chromosomal region 19q13.4.
Synonyms:	CD85g; ILT7
Note:	Immunogen Sequence Homology: Human: 100%



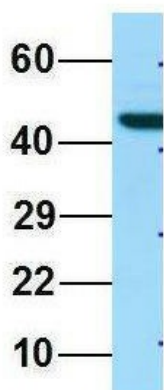
[View online »](#)

Product images:



WB Suggested Anti-LILRA4 Antibody; Titration: 1.0 ug/ml; Positive Control: 721_B Whole Cell

LILRA4



Rabbit Anti-LILRA4
 Sample Type: Human 293T
 Antibody Concentration: 1ug/mL

Host: Rabbit; Target Name: LILRA4; Sample Tissue: 293T; Antibody Dilution: 1.0 ug/ml