

## Product datasheet for **TA338102**

### TLL1 Rabbit Polyclonal Antibody

#### Product data:

Product Type:	Primary Antibodies
Applications:	WB
Recommended Dilution:	WB
Reactivity:	Human
Host:	Rabbit
Isotype:	IgG
Clonality:	Polyclonal
Immunogen:	The immunogen for anti-TLL1 antibody is: synthetic peptide directed towards the C-terminal region of Human TLL1. Synthetic peptide located within the following region: DASVQRKGFQATHSTECGGRLKAESKPRDLYSHAQFGDNNYPGQVDCEWL
Formulation:	Liquid. Purified antibody supplied in 1x PBS buffer with 0.09% (w/v) sodium azide and 2% sucrose. <i>Note that this product is shipped as lyophilized powder to China customers.</i>
Purification:	Affinity Purified
Conjugation:	Unconjugated
Storage:	Store at -20°C as received.
Stability:	Stable for 12 months from date of receipt.
Predicted Protein Size:	115 kDa
Gene Name:	tolloid like 1
Database Link:	<a href="#">NP_036596</a> <a href="#">Entrez Gene 7092 Human</a> <a href="#">O43897</a>



[View online »](#)

**Background:**

This gene encodes an astacin-like, zinc-dependent, metalloprotease that belongs to the peptidase M12A family. This protease processes procollagen C-propeptides, such as chordin, pro-biglycan and pro-lysyl oxidase. Studies in mice suggest that this gene plays multiple roles in the development of mammalian heart, and is essential for the formation of the interventricular septum. Allelic variants of this gene are associated with atrial septal defect type 6. Alternatively spliced transcript variants encoding different isoforms have been found for this gene.

**Synonyms:**

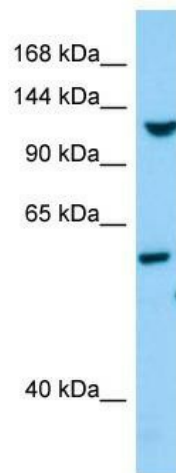
ASD6; TLL

**Note:**

Immunogen Sequence Homology: Dog: 100%; Pig: 100%; Rat: 100%; Horse: 100%; Human: 100%; Mouse: 100%; Zebrafish: 100%; Guinea pig: 100%; Bovine: 93%; Rabbit: 93%

**Protein Families:**

Druggable Genome, Protease, Secreted Protein

**Product images:**

WB Suggested Anti-TLL1 Antibody; Titration: 1.0 ug/ml; Positive Control: Fetal Heart