

Product datasheet for **TA338101**

CTNNA3 Rabbit Polyclonal Antibody

Product data:

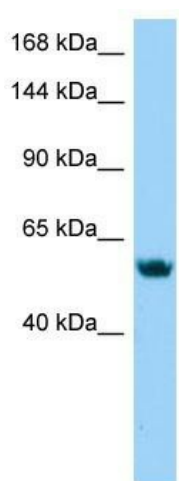
Product Type:	Primary Antibodies
Applications:	WB
Recommended Dilution:	WB
Reactivity:	Mouse
Host:	Rabbit
Isotype:	IgG
Clonality:	Polyclonal
Immunogen:	The immunogen for anti-CTNNA3 antibody is: synthetic peptide directed towards the N-terminal region of Human CTNNA3. Synthetic peptide located within the following region: PLIIQVTTLVNCPQNPSSRKKGRSKRASVLLASVEEATWNLLDKGEKIAQ
Formulation:	Liquid. Purified antibody supplied in 1x PBS buffer with 0.09% (w/v) sodium azide and 2% sucrose. <i>Note that this product is shipped as lyophilized powder to China customers.</i>
Purification:	Affinity Purified
Conjugation:	Unconjugated
Storage:	Store at -20°C as received.
Stability:	Stable for 12 months from date of receipt.
Predicted Protein Size:	56 kDa
Gene Name:	catenin alpha 3
Database Link:	NP_037398 Entrez Gene 216033 Mouse Q9UI47
Background:	CTNNA3 may be involved in formation of stretch-resistant cell-cell adhesion complexes.
Synonyms:	ARVD13; VR22
Note:	Immunogen Sequence Homology: Human: 100%; Dog: 92%; Rat: 92%; Horse: 92%; Mouse: 92%; Bovine: 92%; Rabbit: 92%; Pig: 85%; Zebrafish: 83%



[View online »](#)

Protein Pathways: Adherens junction, Arrhythmogenic right ventricular cardiomyopathy (ARVC), Endometrial cancer, Leukocyte transendothelial migration, Pathways in cancer, Tight junction

Product images:



Host: Rabbit

Target Name: CTNNA3

Sample Tissue: Jurkat Cell Lysate

Antibody Dilution: 1.0 µg/ml

Host: Rabbit; Target Name: CTNNA3; Sample Tissue: Jurkat Whole Cell lysates; Antibody Dilution: 1.0 ug/ml