

Product datasheet for **TA338100**

SEC61A (SEC61A1) Rabbit Polyclonal Antibody

Product data:

Product Type:	Primary Antibodies
Applications:	WB
Recommended Dilution:	WB
Reactivity:	Human
Host:	Rabbit
Isotype:	IgG
Clonality:	Polyclonal
Immunogen:	The immunogen for anti-SEC61A1 antibody is: synthetic peptide directed towards the C-terminal region of Human SEC61A1. Synthetic peptide located within the following region: TWIEVSGSSAKDVAKQLKEQQMVMRGRHRETSMVHELNRYIPTAAAFGLC
Formulation:	Liquid. Purified antibody supplied in 1x PBS buffer with 0.09% (w/v) sodium azide and 2% sucrose. <i>Note that this product is shipped as lyophilized powder to China customers.</i>
Purification:	Affinity Purified
Conjugation:	Unconjugated
Storage:	Store at -20°C as received.
Stability:	Stable for 12 months from date of receipt.
Predicted Protein Size:	52 kDa
Gene Name:	Sec61 translocon alpha 1 subunit
Database Link:	NP_037468 Entrez Gene 29927 Human P61619
Background:	The protein encoded by this gene belongs to the SECY/SEC61- alpha family. It appears to play a crucial role in the insertion of secretory and membrane polypeptides into the endoplasmic reticulum. This protein found to be tightly associated with membrane-bound ribosomes, either directly or through adaptor proteins. This gene encodes an alpha subunit of the heteromeric SEC61 complex, which also contains beta and gamma subunits.
Synonyms:	HSEC61; SEC61; SEC61A



[View online »](#)

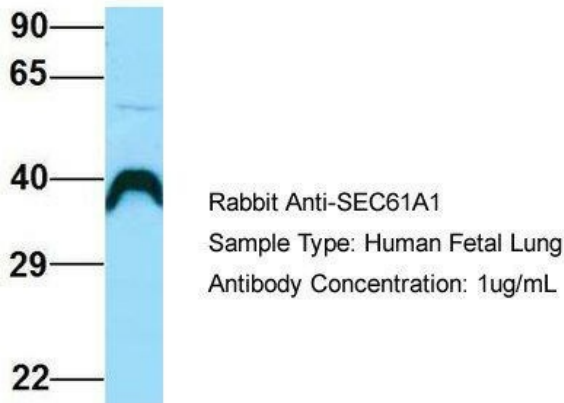
Note: Immunogen Sequence Homology: Dog: 100%; Pig: 100%; Rat: 100%; Goat: 100%; Horse: 100%; Human: 100%; Mouse: 100%; Bovine: 100%; Rabbit: 100%; Zebrafish: 100%; Guinea pig: 100%

Protein Families: Transmembrane

Protein Pathways: Vibrio cholerae infection

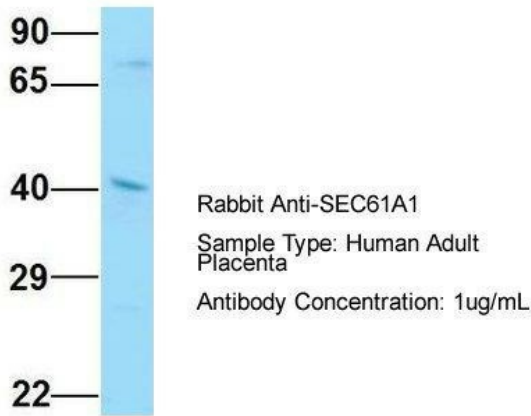
Product images:

SEC61A1

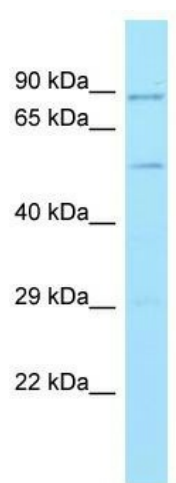


Host: Rabbit; Target Name: SEC61A1; Sample Tissue: Human Fetal Lung; Antibody Dilution: 1.0 ug/ml

SEC61A1



Host: Rabbit; Target Name: SEC61A1; Sample Tissue: Human Adult Placenta; Antibody Dilution: 1.0 ug/ml



WB Suggested Anti-SEC61A1 Antibody; Titration: 1.0 ug/ml; Positive Control: HT1080 Whole Cell
SEC61A1 is supported by BioGPS gene expression data to be expressed in HT1080