

Product datasheet for **TA338099**

DPP2 (DPP7) Rabbit Polyclonal Antibody

Product data:

Product Type:	Primary Antibodies
Applications:	WB
Recommended Dilution:	WB
Reactivity:	Human
Host:	Rabbit
Isotype:	IgG
Clonality:	Polyclonal
Immunogen:	The immunogen for anti-DPP7 antibody is: synthetic peptide directed towards the middle region of Human DPP7. Synthetic peptide located within the following region: FRQIKDLFLQGAYDTRWFGTCQPLSDEKDLTQLFMFARNAFTVLAMMD
Formulation:	Liquid. Purified antibody supplied in 1x PBS buffer with 0.09% (w/v) sodium azide and 2% sucrose. <i>Note that this product is shipped as lyophilized powder to China customers.</i>
Purification:	Affinity Purified
Conjugation:	Unconjugated
Storage:	Store at -20°C as received.
Stability:	Stable for 12 months from date of receipt.
Predicted Protein Size:	52 kDa
Gene Name:	dipeptidyl peptidase 7
Database Link:	NP_037511 Entrez Gene 29952 Human Q9UHL4
Background:	The protein encoded by this gene is a post-proline cleaving aminopeptidase expressed in quiescent lymphocytes. The resting lymphocytes are maintained through suppression of apoptosis, a state which is disrupted by inhibition of this novel serine protease. The enzyme has strong sequence homology with prolylcarboxypeptidase and is active at both acidic and neutral pH.
Synonyms:	DPP2; DPPII; QPP

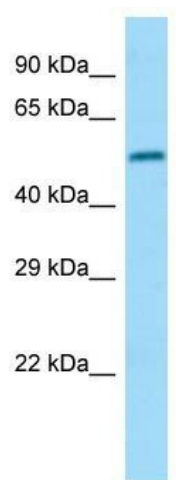


[View online »](#)

Note: Immunogen Sequence Homology: Human: 100%; Dog: 85%; Bovine: 85%

Protein Families: Protease

Product images:



WB Suggested Anti-DPP7 Antibody; Titration: 1.0 ug/ml; Positive Control: 721_B Whole Cell