

Product datasheet for **TA338098**

Cog1 Rabbit Polyclonal Antibody

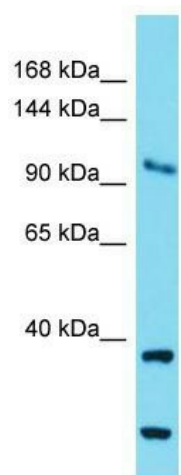
Product data:

Product Type:	Primary Antibodies
Applications:	WB
Recommended Dilution:	WB
Reactivity:	Mouse
Host:	Rabbit
Isotype:	IgG
Clonality:	Polyclonal
Immunogen:	The immunogen for anti-Cog1 antibody is: synthetic peptide directed towards the C-terminal region of Mouse Cog1. Synthetic peptide located within the following region: ENQIKKEGAFPMTQNRALQLLYDLRYLTMVLSSKGEEVKSGRSKADSRME
Formulation:	Liquid. Purified antibody supplied in 1x PBS buffer with 0.09% (w/v) sodium azide and 2% sucrose.
Purification:	Affinity Purified
Conjugation:	Unconjugated
Storage:	Store at -20°C as received.
Stability:	Stable for 12 months from date of receipt.
Predicted Protein Size:	109 kDa
Gene Name:	component of oligomeric golgi complex 1
Database Link:	NP_038609 Entrez Gene 16834 Mouse Q9Z160
Background:	Cog1 is required for normal Golgi function.
Synonyms:	CDG2G; DKFZp762L1710; KIAA1381; LDLB
Note:	Immunogen Sequence Homology: Human: 100%; Pig: 86%; Horse: 86%; Mouse: 86%; Rabbit: 86%; Dog: 83%; Rat: 79%



[View online »](#)

Product images:



Host: Rabbit; Target Name: Cog1; Sample Tissue: Mouse Brain lysates; Antibody Dilution: 1.0 ug/ml