

Product datasheet for **TA338096**

DYNLRB1 Rabbit Polyclonal Antibody

Product data:

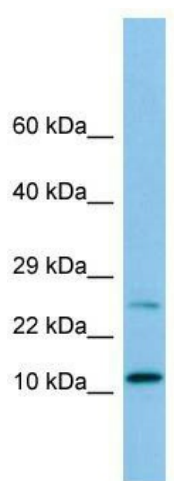
Product Type:	Primary Antibodies
Applications:	WB
Recommended Dilution:	WB
Reactivity:	Human
Host:	Rabbit
Isotype:	IgG
Clonality:	Polyclonal
Immunogen:	The immunogen for anti-DYNLRB1 antibody is: synthetic peptide directed towards the N-terminal region of Human DYNLRB1. Synthetic peptide located within the following region: VNTEGIPIKSTMDNPTTTQYASLMHSFILKARSTVRDIDPQNDLTLRIR
Formulation:	Liquid. Purified antibody supplied in 1x PBS buffer with 0.09% (w/v) sodium azide and 2% sucrose. <i>Note that this product is shipped as lyophilized powder to China customers.</i>
Purification:	Affinity Purified
Conjugation:	Unconjugated
Storage:	Store at -20°C as received.
Stability:	Stable for 12 months from date of receipt.
Predicted Protein Size:	11 kDa
Gene Name:	dynein light chain roadblock-type 1
Database Link:	NP_054902 Entrez Gene 83658 Human Q9NP97
Background:	This gene is a member of the roadblock dynein light chain family and encodes a cytoplasmic protein that is capable of binding intermediate chain proteins. Upregulation of this gene has been associated with hepatocellular carcinomas, suggesting that this gene may be involved in tumor progression.
Synonyms:	BITH; BLP; DNCL2A; DNLC2A; ROBLD1



[View online »](#)

Note: Immunogen Sequence Homology: Dog: 100%; Pig: 100%; Rat: 100%; Horse: 100%; Human: 100%; Mouse: 100%; Bovine: 100%; Rabbit: 100%; Guinea pig: 100%

Product images:



WB Suggested Anti-DYNLRB1 Antibody; Titration: 1.0 ug/ml; Positive Control: Hela Whole Cell
DYNLRB1 is strongly supported by BioGPS gene expression data to be expressed in Human HeLa cells