

## Product datasheet for **TA338094**

### EIF2B2 Rabbit Polyclonal Antibody

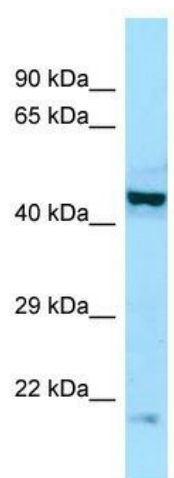
#### Product data:

Product Type:	Primary Antibodies
Applications:	WB
Recommended Dilution:	WB
Reactivity:	Human
Host:	Rabbit
Isotype:	IgG
Clonality:	Polyclonal
Immunogen:	The immunogen for anti-EIF2B2 antibody is: synthetic peptide directed towards the middle region of Human EIF2B2. Synthetic peptide located within the following region: EGTMENIAAQALEHIHSNEVIMTIGFSRTVEAFLKEAARKRKFHVIVAEC
Formulation:	Liquid. Purified antibody supplied in 1x PBS buffer with 0.09% (w/v) sodium azide and 2% sucrose. <i>Note that this product is shipped as lyophilized powder to China customers.</i>
Purification:	Affinity Purified
Conjugation:	Unconjugated
Storage:	Store at -20°C as received.
Stability:	Stable for 12 months from date of receipt.
Predicted Protein Size:	39 kDa
Gene Name:	eukaryotic translation initiation factor 2B subunit beta
Database Link:	<a href="#">NP_055054</a> <a href="#">Entrez Gene 8892 Human P49770</a>
Background:	This gene encodes the beta subunit of eukaryotic initiation factor-2B (EIF2B). EIF2B is involved in protein synthesis and exchanges GDP and GTP for its activation and deactivation.
Synonyms:	EIF-2Bbeta; EIF2B
Note:	Immunogen Sequence Homology: Pig: 100%; Rat: 100%; Horse: 100%; Human: 100%; Mouse: 100%; Guinea pig: 100%; Dog: 93%; Yeast: 93%; Bovine: 93%; Rabbit: 93%; Zebrafish: 93%



[View online »](#)

## Product images:



WB Suggested Anti-EIF2B2 Antibody; Titration: 1.0 ug/ml; Positive Control: RPMI-8226 Whole Cell