

Product datasheet for **TA338093**

EIF2B2 Rabbit Polyclonal Antibody

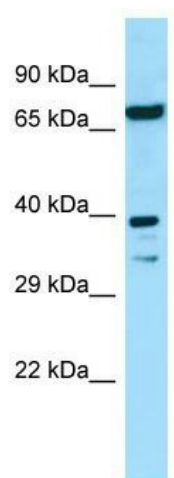
Product data:

Product Type:	Primary Antibodies
Applications:	WB
Recommended Dilution:	WB
Reactivity:	Human
Host:	Rabbit
Isotype:	IgG
Clonality:	Polyclonal
Immunogen:	The immunogen for anti-EIF2B2 antibody is: synthetic peptide directed towards the N-terminal region of Human EIF2B2. Synthetic peptide located within the following region: YGRLHGRSDESDQQESLHKLLTSGGLNEDFSFHYAQLQSNIIIEAINELLV
Formulation:	Liquid. Purified antibody supplied in 1x PBS buffer with 0.09% (w/v) sodium azide and 2% sucrose. <i>Note that this product is shipped as lyophilized powder to China customers.</i>
Purification:	Affinity Purified
Conjugation:	Unconjugated
Storage:	Store at -20°C as received.
Stability:	Stable for 12 months from date of receipt.
Predicted Protein Size:	39 kDa
Gene Name:	eukaryotic translation initiation factor 2B subunit beta
Database Link:	NP_055054 Entrez Gene 8892 Human P49770
Background:	This gene encodes the beta subunit of eukaryotic initiation factor-2B (EIF2B). EIF2B is involved in protein synthesis and exchanges GDP and GTP for its activation and deactivation.
Synonyms:	EIF-2Bbeta; EIF2B
Note:	Immunogen Sequence Homology: Dog: 100%; Pig: 100%; Rat: 100%; Horse: 100%; Human: 100%; Mouse: 100%; Bovine: 100%; Rabbit: 100%; Guinea pig: 100%



[View online »](#)

Product images:



WB Suggested Anti-EIF2B2 Antibody; Titration: 1.0 ug/ml; Positive Control: 293T Whole Cell EIF2B2 is supported by BioGPS gene expression data to be expressed in HEK293T