

## Product datasheet for **TA338091**

### PISD Rabbit Polyclonal Antibody

#### Product data:

Product Type:	Primary Antibodies
Applications:	WB
Recommended Dilution:	WB
Reactivity:	Human
Host:	Rabbit
Isotype:	IgG
Clonality:	Polyclonal
Immunogen:	The immunogen for anti-PISD antibody is: synthetic peptide directed towards the C-terminal region of Human PISD. Synthetic peptide located within the following region: WKHGFFSLTAVGATNVGSIRIYFDRDLHTNSPRHSGSYNDFSVTHTNR
Formulation:	Liquid. Purified antibody supplied in 1x PBS buffer with 0.09% (w/v) sodium azide and 2% sucrose. <i>Note that this product is shipped as lyophilized powder to China customers.</i>
Purification:	Affinity Purified
Conjugation:	Unconjugated
Storage:	Store at -20°C as received.
Stability:	Stable for 12 months from date of receipt.
Predicted Protein Size:	43 kDa
Gene Name:	phosphatidylserine decarboxylase
Database Link:	<a href="#">NP_055153</a> <a href="#">Entrez Gene 23761 Human</a> <a href="#">Q9UG56</a>
Background:	Phosphatidylserine decarboxylases catalyze the formation of phosphatidylethanolamine (PE) by decarboxylation of phosphatidylserine (PS). Type I PSDs, such as PISD, are targeted to the inner mitochondrial membrane by an N-terminal targeting sequence. PISD also contains a conserved LGST motif that functions as an autocatalytic cleavage site where the proenzyme is split into mature alpha and beta subunits.
Synonyms:	DJ858B16; dj858B16.2; PSD; PSDC; PSSC

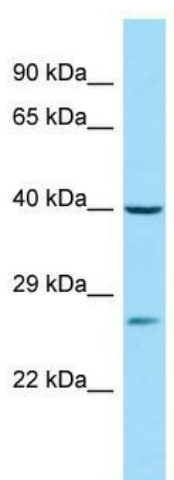


[View online »](#)

**Note:** Immunogen Sequence Homology: Human: 100%; Dog: 93%; Pig: 93%; Rat: 93%; Horse: 93%; Bovine: 93%; Rabbit: 93%; Guinea pig: 93%; Mouse: 92%

**Protein Pathways:** Glycerophospholipid metabolism, Metabolic pathways

**Product images:**



WB Suggested Anti-PISD Antibody; Titration: 1.0 ug/ml; Positive Control: 721\_B Whole Cell PISD is supported by BioGPS gene expression data to be expressed in 721\_B