

Product datasheet for **TA338090**

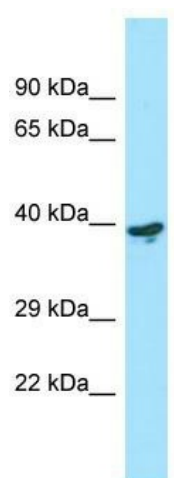
LYPD3 Rabbit Polyclonal Antibody

Product data:

Product Type:	Primary Antibodies
Applications:	WB
Recommended Dilution:	WB
Reactivity:	Human
Host:	Rabbit
Isotype:	IgG
Clonality:	Polyclonal
Immunogen:	The immunogen for anti-LYPD3 antibody is: synthetic peptide directed towards the C-terminal region of Human LYPD3. Synthetic peptide located within the following region: PVRPTSTTKPMPAPTSQTPRQGVEHEASRDEEPRLTGGAAGHQDRSNSGQ
Formulation:	Liquid. Purified antibody supplied in 1x PBS buffer with 0.09% (w/v) sodium azide and 2% sucrose. <i>Note that this product is shipped as lyophilized powder to China customers.</i>
Purification:	Affinity Purified
Conjugation:	Unconjugated
Storage:	Store at -20°C as received.
Stability:	Stable for 12 months from date of receipt.
Predicted Protein Size:	38 kDa
Gene Name:	LY6/PLAUR domain containing 3
Database Link:	NP_055215 Entrez Gene 27076 Human O95274
Background:	LYPD3 supports cell migration. It may be involved in urothelial cell-matrix interactions and tumor progression.
Synonyms:	C4.4A
Note:	Immunogen Sequence Homology: Human: 100%
Protein Families:	Druggable Genome



[View online »](#)

Product images:

Host: Rabbit; Target Name: LYPD3; Sample
Tissue: THP-1 Whole Cell lysates; Antibody
Dilution: 1.0 ug/ml