

Product datasheet for **TA338088**

BBS9 Rabbit Polyclonal Antibody

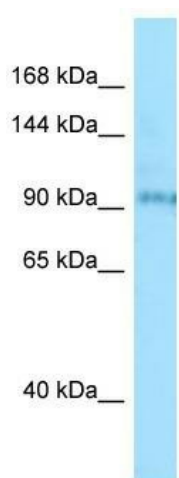
Product data:

Product Type:	Primary Antibodies
Applications:	WB
Recommended Dilution:	WB
Reactivity:	Human
Host:	Rabbit
Isotype:	IgG
Clonality:	Polyclonal
Immunogen:	The immunogen for anti-BBS9 antibody is: synthetic peptide directed towards the N-terminal region of Human BBS9. Synthetic peptide located within the following region: TDSFLT VSSCQ QVESYKYQLAFATDADKRQETEQQLGSGKRLVDWTL
Formulation:	Liquid. Purified antibody supplied in 1x PBS buffer with 0.09% (w/v) sodium azide and 2% sucrose.
Purification:	Affinity Purified
Conjugation:	Unconjugated
Storage:	Store at -20°C as received.
Stability:	Stable for 12 months from date of receipt.
Predicted Protein Size:	95 kDa
Gene Name:	Bardet-Biedl syndrome 9
Database Link:	NP_055266 Entrez Gene 27241 Human Q3SYG4
Background:	This gene is downregulated by parathyroid hormone in osteoblastic cells, and therefore, is thought to be involved in parathyroid hormone action in bones. The exact function of this gene has not yet been determined. Alternatively spliced transcript variants encoding different isoforms have been identified.
Synonyms:	B1; C18; D1; PTHB1
Note:	Immunogen Sequence Homology: Dog: 100%; Pig: 100%; Horse: 100%; Human: 100%; Bovine: 100%; Rabbit: 100%; Rat: 93%; Guinea pig: 93%; Mouse: 86%



[View online »](#)

Product images:



WB Suggested Anti-BBS9 Antibody; Titration: 1.0 ug/ml; Positive Control: Jurkat Whole Cell