

## Product datasheet for **TA338086**

### CYFIP1 Rabbit Polyclonal Antibody

#### Product data:

Product Type:	Primary Antibodies
Applications:	WB
Recommended Dilution:	WB
Reactivity:	Human
Host:	Rabbit
Isotype:	IgG
Clonality:	Polyclonal
Immunogen:	The immunogen for anti-CYFIP1 antibody is: synthetic peptide directed towards the C-terminal region of Human CYFIP1. Synthetic peptide located within the following region: WAGCMIIVLLGQRRFAVLDFCYHLLKVQKHDGKDEIKNVPLKKMVERI
Formulation:	Liquid. Purified antibody supplied in 1x PBS buffer with 0.09% (w/v) sodium azide and 2% sucrose. <i>Note that this product is shipped as lyophilized powder to China customers.</i>
Purification:	Affinity Purified
Conjugation:	Unconjugated
Storage:	Store at -20°C as received.
Stability:	Stable for 12 months from date of receipt.
Predicted Protein Size:	145 kDa
Gene Name:	cytoplasmic FMR1 interacting protein 1
Database Link:	<a href="#">NP_055423</a> <a href="#">Entrez Gene 23191 Human</a> <a href="#">Q7L576</a>



[View online »](#)

**Background:**

CYFIP1 is a component of the CYFIP1-EIF4E-FMR1 complex which binds to the mRNA cap and mediates translational repression. In the CYFIP1-EIF4E-FMR1 complex this subunit is an adapter between EIF4E and FMR1. CYFIP1 promotes the translation repression activity of FMR1 in brain probably by mediating its association with EIF4E and mRNA. By similarity, CYFIP1 regulates formation of membrane ruffles and lamellipodia. CYFIP1 plays a role in axon outgrowth. CYFIP1 binds to F-actin but not to RNA. Part of the WAVE complex that regulates actin filament reorganization via its interaction with the Arp2/3 complex. Actin remodeling activity is regulated by RAC1. Regulator of epithelial morphogenesis. CYFIP1 may act as an invasion suppressor in cancers.

**Synonyms:**

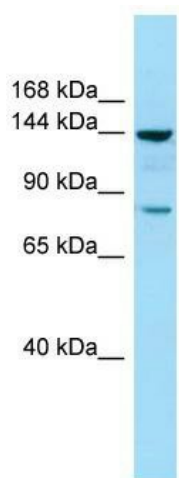
P140SRA-1; SHYC; SRA-1; SRA1

**Note:**

Immunogen Sequence Homology: Dog: 100%; Pig: 100%; Rat: 100%; Horse: 100%; Human: 100%; Mouse: 100%; Bovine: 100%; Rabbit: 100%; Zebrafish: 100%; Guinea pig: 100%; Goat: 93%

**Protein Pathways:**

Regulation of actin cytoskeleton

**Product images:**


WB Suggested Anti-CYFIP1 Antibody; Titration: 1.0 ug/ml; Positive Control: COLO205 Whole Cell