

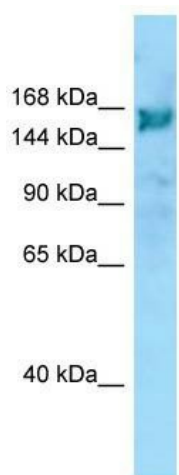
## Product datasheet for **TA338084**

### ARHGEF10 Rabbit Polyclonal Antibody

#### Product data:

Product Type:	Primary Antibodies
Applications:	WB
Recommended Dilution:	WB
Reactivity:	Human
Host:	Rabbit
Isotype:	IgG
Clonality:	Polyclonal
Immunogen:	The immunogen for anti-ARHGEF10 antibody is: synthetic peptide directed towards the C-terminal region of Human ARHGEF10. Synthetic peptide located within the following region: SRDSLAPGPEPQDEDQKDALPSGGAGSSLSQGDPDAAIWLGDSLGSMTQK
Formulation:	Liquid. Purified antibody supplied in 1x PBS buffer with 0.09% (w/v) sodium azide and 2% sucrose.
Purification:	Affinity Purified
Conjugation:	Unconjugated
Storage:	Store at -20°C as received.
Stability:	Stable for 12 months from date of receipt.
Predicted Protein Size:	149 kDa
Gene Name:	Rho guanine nucleotide exchange factor 10
Database Link:	<a href="#">NP_055444</a> <a href="#">Entrez Gene 9639 Human</a> <a href="#">O15013</a>
Background:	Rho GTPases play a fundamental role in numerous cellular processes that are initiated by extracellular stimuli that work through G protein coupled receptors. The encoded protein may form complex with G proteins and stimulate Rho-dependent signals.
Synonyms:	GEF10; SNCV
Note:	Immunogen Sequence Homology: Human: 100%
Protein Families:	Druggable Genome


[View online »](#)

**Product images:**

WB Suggested Anti-ARHGEF10 Antibody;  
Titration: 1.0 ug/ml; Positive Control: ACHN Whole  
Cell ARHGEF10 is supported by BioGPS gene  
expression data to be expressed in ACHN