

Product datasheet for **TA338082**

KIAA0652 (ATG13) Rabbit Polyclonal Antibody

Product data:

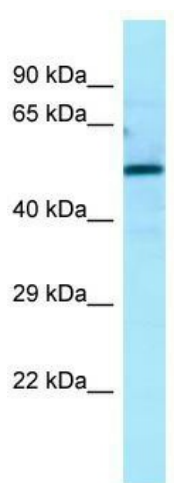
Product Type:	Primary Antibodies
Applications:	WB
Recommended Dilution:	WB
Reactivity:	Human
Host:	Rabbit
Isotype:	IgG
Clonality:	Polyclonal
Immunogen:	The immunogen for anti-ATG13 antibody is: synthetic peptide directed towards the N-terminal region of Human ATG13. Synthetic peptide located within the following region: MCVEISLKTSEGDMSMELEIWCLEMNEKCDKEIKVSYTVYNRLSLLKSL
Formulation:	Liquid. Purified antibody supplied in 1x PBS buffer with 0.09% (w/v) sodium azide and 2% sucrose. <i>Note that this product is shipped as lyophilized powder to China customers.</i>
Purification:	Affinity Purified
Conjugation:	Unconjugated
Storage:	Store at -20°C as received.
Stability:	Stable for 12 months from date of receipt.
Predicted Protein Size:	53 kDa
Gene Name:	autophagy related 13
Database Link:	NP_055556 Entrez Gene 9776 Human O75143
Background:	ATG13 is an autophagy factor required for autophagosome formation. ATG13 is a target of the TOR kinase signaling pathway that regulates autophagy through the control of the phosphorylation status of ATG13 and ULK1, and the regulation of the ATG13-ULK1-RB1CC1 complex.
Synonyms:	KIAA0652; PARATARG8



[View online »](#)

Note: Immunogen Sequence Homology: Dog: 100%; Pig: 100%; Rat: 100%; Horse: 100%; Human: 100%; Mouse: 100%; Bovine: 100%; Rabbit: 100%; Guinea pig: 100%; Zebrafish: 93%

Product images:



WB Suggested Anti-ATG13 Antibody; Titration: 1.0 ug/ml; Positive Control: 293T Whole Cell There is BioGPS gene expression data showing that ATG13 is expressed in HEK293T