

## Product datasheet for **TA338081**

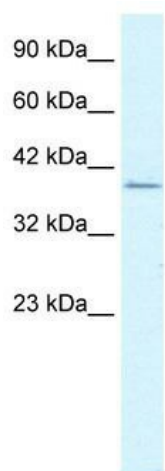
### RIMS3 Rabbit Polyclonal Antibody

#### Product data:

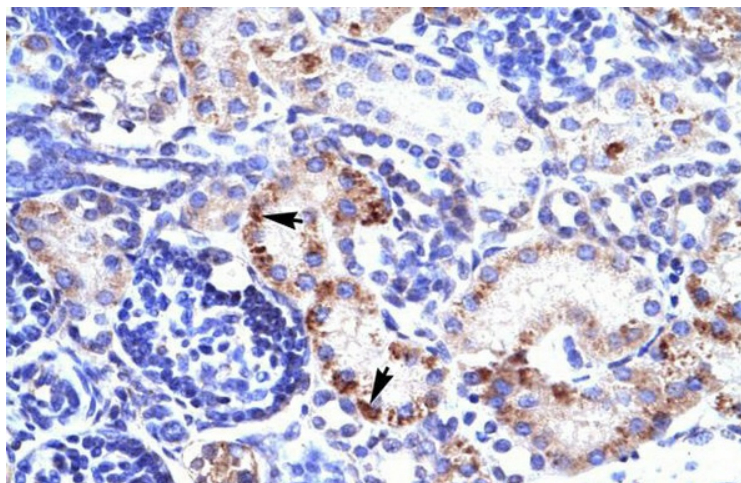
Product Type:	Primary Antibodies
Applications:	IHC, WB
Recommended Dilution:	WB, IHC
Reactivity:	Mouse, Human
Host:	Rabbit
Isotype:	IgG
Clonality:	Polyclonal
Immunogen:	The immunogen for anti-RIMS3 antibody: synthetic peptide directed towards the C terminal of human RIMS3. Synthetic peptide located within the following region: IMLDELDSLAAVTGWYKLFPTSSVADSTLGLSLTRRLSQSSLESATSPSCS
Formulation:	Liquid. Purified antibody supplied in 1x PBS buffer with 0.09% (w/v) sodium azide and 2% sucrose.
Purification:	Protein A purified
Conjugation:	Unconjugated
Storage:	Store at -20°C as received.
Stability:	Stable for 12 months from date of receipt.
Predicted Protein Size:	33 kDa
Gene Name:	regulating synaptic membrane exocytosis 3
Database Link:	<a href="#">NP_055562</a> <a href="#">Entrez Gene 242662 Mouse</a> <a href="#">Entrez Gene 9783 Human</a> <a href="#">Q9UJD0</a>
Background:	RIMS3 belongs to a family of synaptic proteins that are essential for normal neurotransmitter release.
Synonyms:	NIM3; RIM3
Note:	Immunogen Sequence Homology: Dog: 100%; Pig: 100%; Rat: 100%; Horse: 100%; Human: 100%; Mouse: 100%; Bovine: 100%; Rabbit: 100%; Zebrafish: 100%; Guinea pig: 100%



[View online »](#)

**Product images:**

WB Suggested Anti-RIMS3 Antibody Titration: 1.25 ug/ml; ELISA Titer: 1:312500; Positive Control: Jurkat cell lysate RIMS3 is strongly supported by BioGPS gene expression data to be expressed in Human Jurkat cells



Human kidney