

## Product datasheet for **TA338077**

### TRIM14 Rabbit Polyclonal Antibody

#### Product data:

Product Type:	Primary Antibodies
Applications:	WB
Recommended Dilution:	WB
Reactivity:	Human
Host:	Rabbit
Isotype:	IgG
Clonality:	Polyclonal
Immunogen:	The immunogen for anti-TRIM14 antibody: synthetic peptide directed towards the middle region of human TRIM14. Synthetic peptide located within the following region: LVEAVESTLQTPDLIRLKESINCQLSDPSSTKPGTLLKTSPSPERSLLLK
Formulation:	Liquid. Purified antibody supplied in 1x PBS buffer with 0.09% (w/v) sodium azide and 2% sucrose. <i>Note that this product is shipped as lyophilized powder to China customers.</i>
Purification:	Affinity Purified
Conjugation:	Unconjugated
Storage:	Store at -20°C as received.
Stability:	Stable for 12 months from date of receipt.
Predicted Protein Size:	50 kDa
Gene Name:	tripartite motif containing 14
Database Link:	<a href="#">NP_055603</a> <a href="#">Entrez Gene 9830 Human Q14142</a>



[View online »](#)

**Background:**

The protein encoded by TRIM14 is a member of the tripartite motif (TRIM) family. The TRIM motif includes three zinc-binding domains, a RING, a B-box type 1 and a B-box type 2, and a coiled-coil region. The protein localizes to cytoplasmic bodies and its function has not been determined. Four alternatively spliced transcript variants for this gene have been described. The protein encoded by this gene is a member of the tripartite motif (TRIM) family. The TRIM motif includes three zinc-binding domains, a RING, a B-box type 1 and a B-box type 2, and a coiled-coil region. The protein localizes to cytoplasmic bodies and its function has not been determined. Four alternatively spliced transcript variants for this gene have been described.

**Synonyms:**

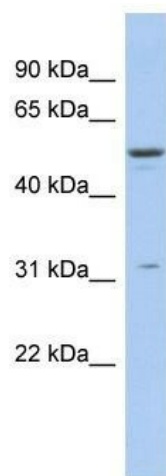
KIAA0129

**Note:**

Immunogen Sequence Homology: Human: 100%; Rat: 92%; Horse: 92%; Mouse: 92%

**Protein Families:**

Druggable Genome

**Product images:**

WB Suggested Anti-TRIM14 Antibody Titration:  
0.2-1 ug/ml; ELISA Titer: 1:62500; Positive Control:  
THP-1 cell lysate