

Product datasheet for **TA338076**

SRGAP3 Rabbit Polyclonal Antibody

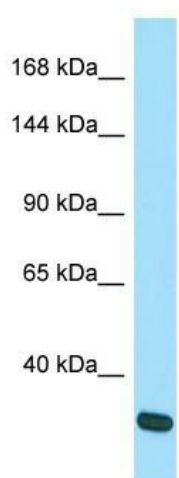
Product data:

Product Type:	Primary Antibodies
Applications:	WB
Recommended Dilution:	WB
Reactivity:	Human
Host:	Rabbit
Isotype:	IgG
Clonality:	Polyclonal
Immunogen:	The immunogen for anti-SRGAP3 antibody is: synthetic peptide directed towards the N-terminal region of Human SRGAP3. Synthetic peptide located within the following region: SSVKKIEKMKEKRQAKYSENKLKCTKARNDYLLNLAATNAAISKYYIHDV
Formulation:	Liquid. Purified antibody supplied in 1x PBS buffer with 0.09% (w/v) sodium azide and 2% sucrose.
Purification:	Affinity Purified
Conjugation:	Unconjugated
Storage:	Store at -20°C as received.
Stability:	Stable for 12 months from date of receipt.
Predicted Protein Size:	36 kDa
Gene Name:	SLIT-ROBO Rho GTPase activating protein 3
Database Link:	NP_055665 Entrez Gene 9901 Human O43295
Background:	The function of this protein remains unknown.
Synonyms:	ARHGAP14; MEGAP; SRGAP2; WRP
Note:	Immunogen Sequence Homology: Dog: 100%; Pig: 100%; Rat: 100%; Horse: 100%; Human: 100%; Mouse: 100%; Bovine: 100%; Rabbit: 100%; Zebrafish: 100%; Guinea pig: 100%
Protein Pathways:	Axon guidance



[View online »](#)

Product images:



Host: Rabbit; Target Name: SRGAP3; Sample
Tissue: A549 Whole Cell lysates; Antibody
Dilution: 1.0 ug/ml