

Product datasheet for **TA338075**

GPR105 (P2RY14) Rabbit Polyclonal Antibody

Product data:

Product Type:	Primary Antibodies
Applications:	WB
Recommended Dilution:	WB
Reactivity:	Human
Host:	Rabbit
Isotype:	IgG
Clonality:	Polyclonal
Immunogen:	The immunogen for anti-P2RY14 antibody is: synthetic peptide directed towards the C-terminal region of Human P2RY14. Synthetic peptide located within the following region: YTKSQTEAHYSCQSKEILRYMKEFTLLLSAANVCLDPIIYFFLCQPFREI
Formulation:	Liquid. Purified antibody supplied in 1x PBS buffer with 0.09% (w/v) sodium azide and 2% sucrose. <i>Note that this product is shipped as lyophilized powder to China customers.</i>
Purification:	Affinity Purified
Conjugation:	Unconjugated
Storage:	Store at -20°C as received.
Stability:	Stable for 12 months from date of receipt.
Predicted Protein Size:	39 kDa
Gene Name:	purinergic receptor P2Y14
Database Link:	NP_055694 Entrez Gene 9934 Human Q15391



[View online »](#)

Background:

The product of this gene belongs to the family of G-protein coupled receptors, which contains several receptor subtypes with different pharmacological selectivity for various adenosine and uridine nucleotides. This receptor is a P2Y purinergic receptor for UDP-glucose and other UDP-sugars coupled to G-proteins. It has been implicated in extending the known immune system functions of P2Y receptors by participating in the regulation of the stem cell compartment, and it may also play a role in neuroimmune function. Two transcript variants encoding the same protein have been identified for this gene.

Synonyms:

BPR105; GPR105; P2Y14

Note:

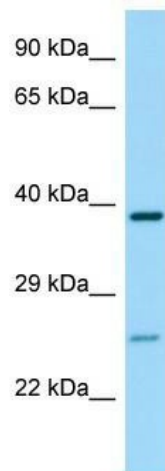
Immunogen Sequence Homology: Pig: 100%; Rat: 100%; Human: 100%; Rabbit: 93%; Guinea pig: 93%; Dog: 92%; Horse: 92%; Bovine: 92%; Mouse: 79%

Protein Families:

Druggable Genome, GPCR, Transmembrane

Protein Pathways:

Neuroactive ligand-receptor interaction

Product images:

WB Suggested Anti-P2RY14 Antibody; Titration: 1.0 ug/ml; Positive Control: MDA-MB-435S Whole Cell P2RY14 is supported by BioGPS gene expression data to be expressed in MDA-MB435