

Product datasheet for **TA338074**

CNKSR2 Rabbit Polyclonal Antibody

Product data:

Product Type:	Primary Antibodies
Applications:	WB
Recommended Dilution:	WB
Reactivity:	Human
Host:	Rabbit
Isotype:	IgG
Clonality:	Polyclonal
Immunogen:	The immunogen for anti-CNKSR2 antibody is: synthetic peptide directed towards the C-terminal region of Human CNKSR2. Synthetic peptide located within the following region: EEEEEEGEAAGENIGEKSESREEKLGDSLQDLYRALEQASLSPLGEHRIS
Formulation:	Liquid. Purified antibody supplied in 1x PBS buffer with 0.09% (w/v) sodium azide and 2% sucrose. <i>Note that this product is shipped as lyophilized powder to China customers.</i>
Purification:	Affinity Purified
Conjugation:	Unconjugated
Storage:	Store at -20°C as received.
Stability:	Stable for 12 months from date of receipt.
Predicted Protein Size:	114 kDa
Gene Name:	connector enhancer of kinase suppressor of Ras 2
Database Link:	NP_055742 Entrez Gene 22866 Human Q8WXI2
Background:	This gene encodes a multidomain protein that functions as a scaffold protein to mediate the mitogen-activated protein kinase pathways downstream from Ras. This gene product is induced by vitamin D and inhibits apoptosis in certain cancer cells. It may also play a role in ternary complex assembly of synaptic proteins at the postsynaptic membrane and coupling of signal transduction to membrane/cytoskeletal remodeling. Multiple transcript variants encoding different isoforms have been found for this gene.

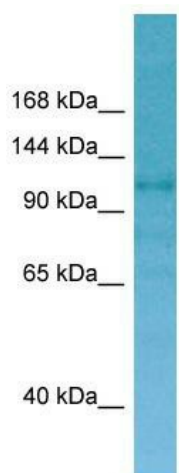


[View online »](#)

Synonyms: CNK2; KSR2; MAGUIN

Note: Immunogen Sequence Homology: Human: 100%; Dog: 93%; Rat: 93%; Horse: 93%; Bovine: 93%; Rabbit: 93%; Mouse: 86%

Product images:



WB Suggested Anti-CNKSR2 Antibody; Titration: 1.0 ug/ml; Positive Control: 721_B Whole Cell