

Product datasheet for **TA338073**

BTBD3 Rabbit Polyclonal Antibody

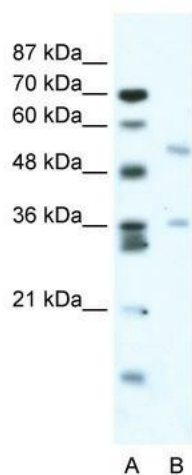
Product data:

Product Type:	Primary Antibodies
Applications:	WB
Recommended Dilution:	WB
Reactivity:	Human
Host:	Rabbit
Isotype:	IgG
Clonality:	Polyclonal
Immunogen:	The immunogen for anti-BTBD3 antibody: synthetic peptide directed towards the middle region of human BTBD3. Synthetic peptide located within the following region: FLWYTAAKKPELQFVSKARKGLVPQRCHRFQSCAYRSNQWRYRGRCDISQ
Formulation:	Liquid. Purified antibody supplied in 1x PBS buffer with 0.09% (w/v) sodium azide and 2% sucrose.
Purification:	Protein A purified
Conjugation:	Unconjugated
Storage:	Store at -20°C as received.
Stability:	Stable for 12 months from date of receipt.
Predicted Protein Size:	58 kDa
Gene Name:	BTB domain containing 3
Database Link:	NP_055777 Entrez Gene 22903 Human Q9Y2F9
Background:	BTBD3 is a protein containing BTB/POZ domain. Its function has not been determined yet.
Synonyms:	dj742j24.1
Note:	Immunogen Sequence Homology: Dog: 100%; Pig: 100%; Rat: 100%; Horse: 100%; Human: 100%; Mouse: 100%; Bovine: 100%; Rabbit: 100%; Guinea pig: 100%; Zebrafish: 79%



[View online »](#)

Product images:



WB Suggested Anti-BTBD3 Antibody Titration: 2.5 ug/ml; ELISA Titer: 1:62500; Positive Control: Jurkat cell lysate