

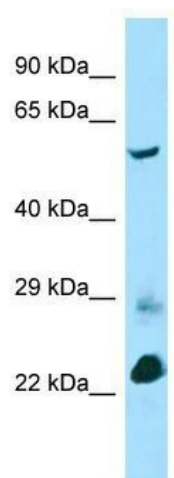
Product datasheet for **TA338072**

BTBD3 Rabbit Polyclonal Antibody

Product data:

Product Type:	Primary Antibodies
Applications:	WB
Recommended Dilution:	WB
Reactivity:	Mouse
Host:	Rabbit
Isotype:	IgG
Clonality:	Polyclonal
Immunogen:	The immunogen for anti-Btbd3 antibody is: synthetic peptide directed towards the C-terminal region of Mouse Btbd3. Synthetic peptide located within the following region: LKRQGVVLGQNLISKYFSDGSSNTFPVWFEYPVQIEPDTFYTASVLDGNE
Formulation:	Liquid. Purified antibody supplied in 1x PBS buffer with 0.09% (w/v) sodium azide and 2% sucrose.
Purification:	Affinity Purified
Conjugation:	Unconjugated
Storage:	Store at -20°C as received.
Stability:	Stable for 12 months from date of receipt.
Predicted Protein Size:	51 kDa
Gene Name:	BTB domain containing 3
Database Link:	NP_055777 Entrez Gene 228662 Mouse Q9Y2F9
Background:	The function of this protein remains unknown.
Synonyms:	dj742j24.1
Note:	Immunogen Sequence Homology: Dog: 100%; Pig: 100%; Rat: 100%; Horse: 100%; Human: 100%; Mouse: 100%; Bovine: 100%; Rabbit: 100%; Guinea pig: 100%; Zebrafish: 86%


[View online »](#)

Product images:


Host: Rabbit; Target Name: Btbd3; Sample
Tissue: Mouse Lung lysates; Antibody Dilution:
1.0 ug/ml