

Product datasheet for **TA338071**

MAST1 Rabbit Polyclonal Antibody

Product data:

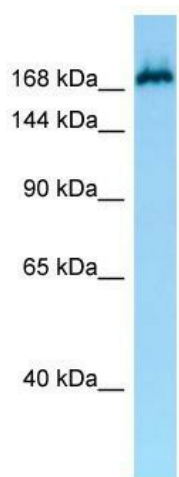
Product Type:	Primary Antibodies
Applications:	WB
Recommended Dilution:	WB
Reactivity:	Human
Host:	Rabbit
Isotype:	IgG
Clonality:	Polyclonal
Immunogen:	The immunogen for anti-MAST1 antibody is: synthetic peptide directed towards the N-terminal region of Human MAST1. Synthetic peptide located within the following region: TRDPFPDVVHLEEQDSGGSNTPEQDDLSEGRSSKAKKPPGENDFDTIKLI
Formulation:	Liquid. Purified antibody supplied in 1x PBS buffer with 0.09% (w/v) sodium azide and 2% sucrose.
Purification:	Affinity Purified
Conjugation:	Unconjugated
Storage:	Store at -20°C as received.
Stability:	Stable for 12 months from date of receipt.
Predicted Protein Size:	171 kDa
Gene Name:	microtubule associated serine/threonine kinase 1
Database Link:	NP_055790 Entrez Gene 22983 Human Q9Y2H9
Background:	MAST1 appears to link the dystrophin/utrophin network with microtubule filaments via the syntrophins. Phosphorylation of DMD or UTRN may modulate their affinities for associated proteins.
Synonyms:	SAST; SAST170
Note:	Immunogen Sequence Homology: Human: 100%; Dog: 93%; Pig: 93%; Bovine: 93%; Rat: 88%; Mouse: 88%; Horse: 81%; Rabbit: 81%; Guinea pig: 75%



[View online »](#)

Protein Families: Druggable Genome, Protein Kinase

Product images:



WB Suggested Anti-MAST1 Antibody; Titration: 1.0 ug/ml; Positive Control: Jurkat Whole Cell