

## Product datasheet for **TA338069**

### RanBP16 (XPO7) Rabbit Polyclonal Antibody

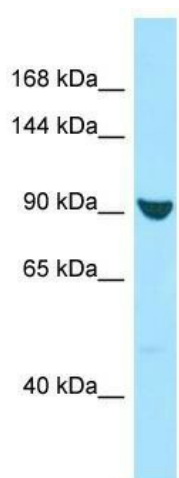
#### Product data:

Product Type:	Primary Antibodies
Applications:	WB
Recommended Dilution:	WB
Reactivity:	Human
Host:	Rabbit
Isotype:	IgG
Clonality:	Polyclonal
Immunogen:	The immunogen for anti-XPO7 antibody is: synthetic peptide directed towards the C-terminal region of Human XPO7. Synthetic peptide located within the following region: PLLGLILLNEKYFSDLRNSIVNSQPPEKQQAMHLCFENLMEGIERNLLTK
Formulation:	Liquid. Purified antibody supplied in 1x PBS buffer with 0.09% (w/v) sodium azide and 2% sucrose. <i>Note that this product is shipped as lyophilized powder to China customers.</i>
Purification:	Affinity Purified
Conjugation:	Unconjugated
Storage:	Store at -20°C as received.
Stability:	Stable for 12 months from date of receipt.
Predicted Protein Size:	95 kDa
Gene Name:	exportin 7
Database Link:	<a href="#">NP_055839</a> <a href="#">Entrez Gene 23039 Human Q9UIA9</a>
Background:	The function of this protein remains unknown.
Synonyms:	EXP7; RANBP16
Note:	Immunogen Sequence Homology: Dog: 100%; Pig: 100%; Rat: 100%; Horse: 100%; Human: 100%; Mouse: 100%; Bovine: 100%; Rabbit: 100%; Zebrafish: 100%; Guinea pig: 100%
Protein Families:	Druggable Genome



[View online »](#)

## Product images:



Host: Rabbit; Target Name: XPO7; Sample Tissue: 721\_B Whole Cell lysates; Antibody Dilution: 1.0 ug/ml