

Product datasheet for **TA338068**

MON2 Rabbit Polyclonal Antibody

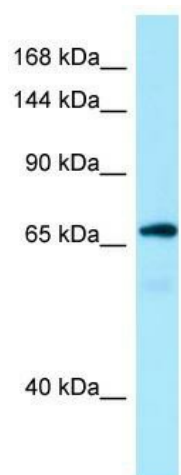
Product data:

Product Type:	Primary Antibodies
Applications:	WB
Recommended Dilution:	WB
Reactivity:	Human
Host:	Rabbit
Isotype:	IgG
Clonality:	Polyclonal
Immunogen:	The immunogen for anti-MON2 antibody is: synthetic peptide directed towards the C-terminal region of Human MON2. Synthetic peptide located within the following region: SVAFHCLLDLVRGITSMIEGELGELETECQTTEEGSSPTQSTEQQDLQS
Formulation:	Liquid. Purified antibody supplied in 1x PBS buffer with 0.09% (w/v) sodium azide and 2% sucrose. <i>Note that this product is shipped as lyophilized powder to China customers.</i>
Purification:	Affinity Purified
Conjugation:	Unconjugated
Storage:	Store at -20°C as received.
Stability:	Stable for 12 months from date of receipt.
Predicted Protein Size:	72 kDa
Gene Name:	MON2 homolog, regulator of endosome-to-Golgi trafficking
Database Link:	NP_055841 Entrez Gene 23041 Human Q7Z3U7
Background:	The function of this protein remains unknown.
Synonyms:	KIAA1040; MGC35493
Note:	Immunogen Sequence Homology: Human: 100%; Rat: 93%; Horse: 86%; Bovine: 86%; Dog: 79%



[View online »](#)

Product images:



WB Suggested Anti-MON2 Antibody; Titration: 1.0 ug/ml; Positive Control: Fetal Kidney