

Product datasheet for TA338066

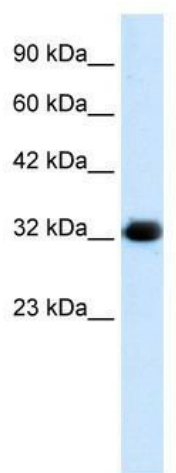
HS747E2A (C22orf31) Rabbit Polyclonal Antibody

Product data:

Product Type:	Primary Antibodies
Applications:	WB
Recommended Dilution:	WB
Reactivity:	Human
Host:	Rabbit
Isotype:	IgG
Clonality:	Polyclonal
Immunogen:	The immunogen for anti-HS747E2A antibody: synthetic peptide directed towards the middle region of human HS747E2A. Synthetic peptide located within the following region: MKATQQARKRNFISSEKSKQPAGHRRPAGGIRESKESSEKELTVRQDLED
Formulation:	Liquid. Purified antibody supplied in 1x PBS buffer with 0.09% (w/v) sodium azide and 2% sucrose.
Purification:	Protein A purified
Conjugation:	Unconjugated
Storage:	Store at -20°C as received.
Stability:	Stable for 12 months from date of receipt.
Predicted Protein Size:	33 kDa
Gene Name:	chromosome 22 open reading frame 31
Database Link:	NP_056185 Entrez Gene 25770 Human O95567
Background:	The gene encoding the hypothetical protein HS747E2A is located on chromosome 22.
Synonyms:	bK747E2.1; HS747E2A
Note:	Immunogen Sequence Homology: Human: 100%; Dog: 92%; Pig: 92%; Horse: 92%; Bovine: 92%


[View online »](#)

Product images:



WB Suggested Anti-HS747E2A Antibody Titration:
1.25 ug/ml; ELISA Titer: 1:500; Positive Control:
HepG2 cell lysate