

Product datasheet for **TA338065**

BRI3 Rabbit Polyclonal Antibody

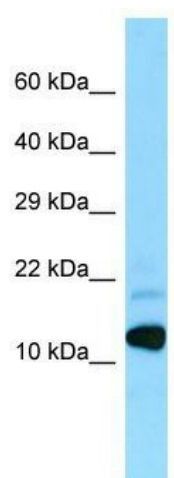
Product data:

Product Type:	Primary Antibodies
Applications:	WB
Recommended Dilution:	WB
Reactivity:	Human
Host:	Rabbit
Isotype:	IgG
Clonality:	Polyclonal
Immunogen:	The immunogen for anti-BRI3 antibody is: synthetic peptide directed towards the N-terminal region of Human BRI3. Synthetic peptide located within the following region: LQERPPAYNLEAGQGDYACGPHGYGAIPAAPPPPPYPYLVTGIPTHHPRV
Formulation:	Liquid. Purified antibody supplied in 1x PBS buffer with 0.09% (w/v) sodium azide and 2% sucrose.
Purification:	Affinity Purified
Conjugation:	Unconjugated
Storage:	Store at -20°C as received.
Stability:	Stable for 12 months from date of receipt.
Predicted Protein Size:	14 kDa
Gene Name:	brain protein I3
Database Link:	NP_056194 Entrez Gene 25798 Human O95415
Background:	The function of this protein remains unknown.
Synonyms:	I3
Note:	Immunogen Sequence Homology: Rat: 100%; Human: 100%; Mouse: 100%; Dog: 93%; Pig: 86%; Guinea pig: 86%; Bovine: 79%
Protein Families:	Transmembrane



[View online »](#)

Product images:



WB Suggested Anti-BRI3 Antibody; Titration: 1.0 ug/ml; Positive Control: Fetal Heart