

Product datasheet for TA338064

CHRD2 Rabbit Polyclonal Antibody

Product data:

Product Type:	Primary Antibodies
Applications:	WB
Recommended Dilution:	WB
Reactivity:	Human
Host:	Rabbit
Isotype:	IgG
Clonality:	Polyclonal
Immunogen:	The immunogen for anti-CHRD2 antibody is: synthetic peptide directed towards the N-terminal region of Human CHRD2. Synthetic peptide located within the following region: CTEGQIYCGLTTCPEPGCPAPLPLPDSCCQACKDEASEQSDEEDSVQSLH
Formulation:	Liquid. Purified antibody supplied in 1x PBS buffer with 0.09% (w/v) sodium azide and 2% sucrose.
Purification:	Affinity Purified
Conjugation:	Unconjugated
Storage:	Store at -20°C as received.
Stability:	Stable for 12 months from date of receipt.
Predicted Protein Size:	3 kDa
Gene Name:	chordin-like 2
Database Link:	NP_056239 Entrez Gene 25884 Human Q6WN34



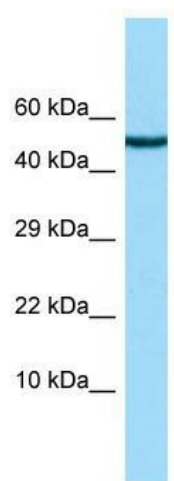
Background: CHRDL2 is implicated in tumor angiogenesis. CHRDL2 may inhibit BMPs activity by blocking their interaction with their receptors. CHRDL2 has a negative regulator effect on the cartilage formation/regeneration from immature mesenchymal cells, by preventing or reducing the rate of matrix accumulation. CHRDL2 may play a role during myoblast and osteoblast differentiation, and maturation.

Synonyms: BNFI; CHL2

Note: Immunogen Sequence Homology: Human: 100%; Yeast: 90%; Mouse: 83%; Rat: 75%

Protein Families: Secreted Protein

Product images:



WB Suggested Anti-CHRDL2 Antibody;
Titration: 1.0 ug/ml; Positive Control: HeLa
Whole cell