

Product datasheet for **TA338063**

ATL3 Rabbit Polyclonal Antibody

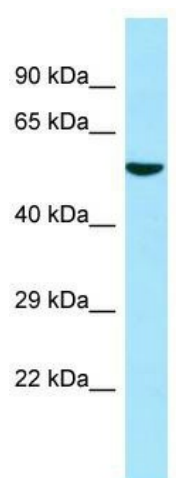
Product data:

Product Type:	Primary Antibodies
Applications:	WB
Recommended Dilution:	WB
Reactivity:	Human
Host:	Rabbit
Isotype:	IgG
Clonality:	Polyclonal
Immunogen:	The immunogen for anti-ATL3 antibody is: synthetic peptide directed towards the middle region of Human ATL3. Synthetic peptide located within the following region: ESGHSNWLGDPEEPLTGFSWRGGSDPETTGIQIWSEVFTVEKPGGKKVAV
Formulation:	Liquid. Purified antibody supplied in 1x PBS buffer with 0.09% (w/v) sodium azide and 2% sucrose. <i>Note that this product is shipped as lyophilized powder to China customers.</i>
Purification:	Affinity Purified
Conjugation:	Unconjugated
Storage:	Store at -20°C as received.
Stability:	Stable for 12 months from date of receipt.
Predicted Protein Size:	57 kDa
Gene Name:	atlastin GTPase 3
Database Link:	NP_056274 Entrez Gene 25923 Human Q6DD88
Background:	The function of this protein remains unknown.
Synonyms:	HSN1F
Note:	Immunogen Sequence Homology: Dog: 100%; Pig: 100%; Rat: 100%; Horse: 100%; Human: 100%; Mouse: 100%; Bovine: 100%; Rabbit: 100%; Zebrafish: 100%; Guinea pig: 86%
Protein Families:	Transmembrane



[View online »](#)

Product images:



Host: Rabbit; Target Name: ATL3; Sample Tissue: 293T Whole Cell lysates; Antibody Dilution: 1.0 ug/ml