

Product datasheet for **TA338061**

FGFR1OP2 Rabbit Polyclonal Antibody

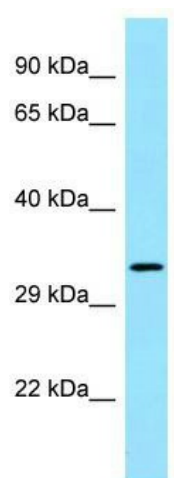
Product data:

Product Type:	Primary Antibodies
Applications:	WB
Recommended Dilution:	WB
Reactivity:	Human
Host:	Rabbit
Isotype:	IgG
Clonality:	Polyclonal
Immunogen:	The immunogen for anti-FGFR1OP2 antibody is: synthetic peptide directed towards the C-terminal region of Human FGFR1OP2. Synthetic peptide located within the following region: ANQNELQAHVDQITEMAAVMRKAIEIDEQQGCKEQERIFQLEQENKGLRE
Formulation:	Liquid. Purified antibody supplied in 1x PBS buffer with 0.09% (w/v) sodium azide and 2% sucrose.
Purification:	Affinity Purified
Conjugation:	Unconjugated
Storage:	Store at -20°C as received.
Stability:	Stable for 12 months from date of receipt.
Predicted Protein Size:	29 kDa
Gene Name:	FGFR1 oncogene partner 2
Database Link:	NP_056448 Entrez Gene 26127 Human Q9NVK5
Background:	FGFR1OP2 may be involved in wound healing pathway.
Synonyms:	HSPC123-like; WIT3.0
Note:	Immunogen Sequence Homology: Dog: 100%; Pig: 100%; Rat: 100%; Human: 100%; Mouse: 100%; Bovine: 100%; Rabbit: 100%; Guinea pig: 100%; Horse: 93%
Protein Families:	Druggable Genome



[View online »](#)

Product images:



WB Suggested Anti-FGFR1OP2 Antibody;
Titration: 1.0 ug/ml; Positive Control: MCF7 Whole Cell