

Product datasheet for **TA338060**

PLA2G3 Rabbit Polyclonal Antibody

Product data:

Product Type:	Primary Antibodies
Applications:	WB
Recommended Dilution:	WB
Reactivity:	Human
Host:	Rabbit
Isotype:	IgG
Clonality:	Polyclonal
Immunogen:	The immunogen for anti-PLA2G3 antibody is: synthetic peptide directed towards the C-terminal region of Human PLA2G3. Synthetic peptide located within the following region: QRRHQLQDKGTDERQPWPSEPLRGPMSEFYNQCLQLTQAARRPDRQQKSW
Formulation:	Liquid. Purified antibody supplied in 1x PBS buffer with 0.09% (w/v) sodium azide and 2% sucrose. <i>Note that this product is shipped as lyophilized powder to China customers.</i>
Purification:	Affinity Purified
Conjugation:	Unconjugated
Storage:	Store at -20°C as received.
Stability:	Stable for 12 months from date of receipt.
Predicted Protein Size:	55 kDa
Gene Name:	phospholipase A2 group III
Database Link:	NP_056530 Entrez Gene 50487 Human Q9NZ20
Background:	PLA2G3 belongs to the family of secreted phospholipase A2 proteins. These Ca(2+)-dependent lipolytic enzymes have a conserved Ca(2+)-binding loop and a his-asp dyad in the catalytic site.
Synonyms:	GIII-SPLA2; sPLA2-III; SPLA2III
Note:	Immunogen Sequence Homology: Human: 100%

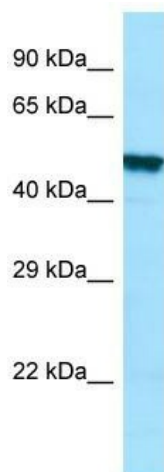


[View online »](#)

Protein Families: Druggable Genome, Secreted Protein

Protein Pathways: alpha-Linolenic acid metabolism, Arachidonic acid metabolism, Ether lipid metabolism, Fc epsilon RI signaling pathway, Glycerophospholipid metabolism, GnRH signaling pathway, Linoleic acid metabolism, Long-term depression, MAPK signaling pathway, Metabolic pathways, Vascular smooth muscle contraction, VEGF signaling pathway

Product images:



WB Suggested Anti-PLA2G3 Antibody; Titration:
1.0 ug/ml; Positive Control: HT1080 Whole Cell