

Product datasheet for **TA338057**

SUV420h1 (KMT5B) Rabbit Polyclonal Antibody

Product data:

Product Type:	Primary Antibodies
Applications:	WB
Recommended Dilution:	WB
Reactivity:	Human
Host:	Rabbit
Isotype:	IgG
Clonality:	Polyclonal
Immunogen:	The immunogen for anti-SUV420H1 antibody: synthetic peptide directed towards the middle region of human SUV420H1. Synthetic peptide located within the following region: PVINSKYGLRETDKRLNRLKKGDSKNSDSQSVSSNTDADTTQEKNNAS
Formulation:	Liquid. Purified antibody supplied in 1x PBS buffer with 0.09% (w/v) sodium azide and 2% sucrose. <i>Note that this product is shipped as lyophilized powder to China customers.</i>
Purification:	Affinity Purified
Conjugation:	Unconjugated
Storage:	Store at -20°C as received.
Stability:	Stable for 12 months from date of receipt.
Predicted Protein Size:	44 kDa
Gene Name:	lysine methyltransferase 5B
Database Link:	NP_057112 Entrez Gene 51111 Human Q4FZB7



[View online »](#)

Background: SUV420H1 is a protein that contains a SET domain. SET domains appear to be protein-protein interaction domains that mediate interactions with a family of proteins that display similarity with dual-specificity phosphatases (dsPTPases). The function of this gene has not been determined. This gene encodes a protein that contains a SET domain. SET domains appear to be protein-protein interaction domains that mediate interactions with a family of proteins that display similarity with dual-specificity phosphatases (dsPTPases). The function of this gene has not been determined. Two alternatively spliced transcript variants have been found for this gene.

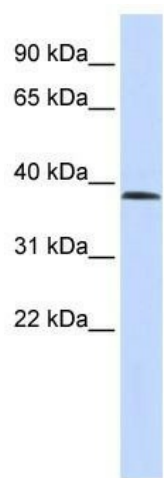
Synonyms: CGI-85; CGI85; SUV420H1

Note: Immunogen Sequence Homology: Dog: 100%; Pig: 100%; Rat: 100%; Horse: 100%; Human: 100%; Mouse: 100%; Bovine: 100%; Rabbit: 100%; Guinea pig: 100%

Protein Families: Druggable Genome

Protein Pathways: Lysine degradation

Product images:



WB Suggested Anti-SUV420H1 Antibody Titration:
0.2-1 ug/ml; ELISA Titer: 1:312500; Positive
Control: Human Lung