

## Product datasheet for **TA338055**

### Shwachman Bodian Diamond syndrome (SBDS) Rabbit Polyclonal Antibody

#### Product data:

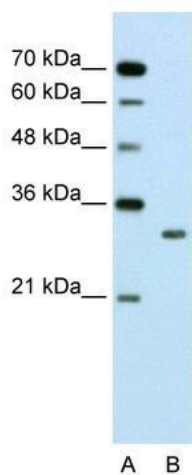
Product Type:	Primary Antibodies
Applications:	IHC, WB
Recommended Dilution:	WB, IHC
Reactivity:	Human
Host:	Rabbit
Isotype:	IgG
Clonality:	Polyclonal
Immunogen:	The immunogen for anti-SBDS antibody: synthetic peptide directed towards the N terminal of human SBDS. Synthetic peptide located within the following region: LQTHSVFVNVSQVAKKEDLISAFGTDDQTEICKQILTKGEVQVSDKER
Formulation:	Liquid. Purified antibody supplied in 1x PBS buffer with 0.09% (w/v) sodium azide and 2% sucrose. <i>Note that this product is shipped as lyophilized powder to China customers.</i>
Purification:	Protein A purified
Conjugation:	Unconjugated
Storage:	Store at -20°C as received.
Stability:	Stable for 12 months from date of receipt.
Predicted Protein Size:	28 kDa
Gene Name:	SBDS ribosome assembly guanine nucleotide exchange factor
Database Link:	<a href="#">NP_057122</a> <a href="#">Entrez Gene 51119 Human</a> <a href="#">Q9Y3A5</a>
Background:	This gene encodes a member of a highly conserved protein family that exists from archaea to vertebrates and plants. The encoded protein may function in RNA metabolism. Mutations within this gene are associated with Shwachman-Bodian-Diamond syndrome. An alternative transcript has been described, but its biological nature has not been determined. This gene has a closely linked pseudogene that is distally located. [provided by RefSeq, Jul 2008]
Synonyms:	CGI-97; SDS; SWDS



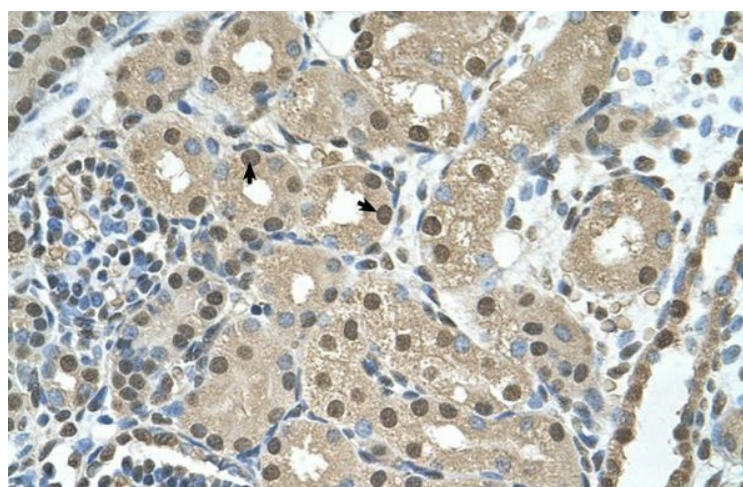
[View online »](#)

**Note:** Immunogen Sequence Homology: Dog: 100%; Pig: 100%; Rat: 100%; Horse: 100%; Human: 100%; Mouse: 100%; Bovine: 100%; Guinea pig: 100%; Rabbit: 93%; Zebrafish: 85%

**Product images:**



WB Suggested Anti-SBDS Antibody Titration: 2.5 ug/ml; Positive Control: Jurkat cell lysate



Human kidney