

## Product datasheet for **TA338054**

### DERL2 Rabbit Polyclonal Antibody

#### Product data:

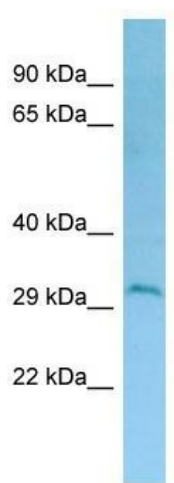
Product Type:	Primary Antibodies
Applications:	WB
Recommended Dilution:	WB
Reactivity:	Human
Host:	Rabbit
Isotype:	IgG
Clonality:	Polyclonal
Immunogen:	The immunogen for anti-DERL2 antibody is: synthetic peptide directed towards the C-terminal region of Human DERL2. Synthetic peptide located within the following region: DVFPNQPGGIRILKTPSILKAIFDTPDEDPNYPNPLPEERPGGFAWGEGQR
Formulation:	Liquid. Purified antibody supplied in 1x PBS buffer with 0.09% (w/v) sodium azide and 2% sucrose.
Purification:	Affinity Purified
Conjugation:	Unconjugated
Storage:	Store at -20°C as received.
Stability:	Stable for 12 months from date of receipt.
Predicted Protein Size:	27 kDa
Gene Name:	derlin 2
Database Link:	<a href="#">NP_057125</a> <a href="#">Entrez Gene 51009 Human</a> <a href="#">Q9GZP9</a>
Background:	Proteins that are unfolded or misfolded in the endoplasmic reticulum (ER) must be refolded or degraded to maintain the homeostasis of the ER. DERL2 is involved in the degradation of misfolded glycoproteins in the ER.
Synonyms:	CGI-101; derlin-2; DERtrin-2; F-LAN-1; F-LANa; FLANa
Note:	Immunogen Sequence Homology: Dog: 100%; Pig: 100%; Rat: 100%; Human: 100%; Mouse: 100%; Bovine: 100%; Rabbit: 100%; Guinea pig: 100%; Horse: 93%; Zebrafish: 86%



[View online »](#)

Protein Families: Transmembrane

### Product images:



WB Suggested Anti-DERL2 Antibody; Titration: 1.0 ug/ml; Positive Control: HCT15 Whole Cell