

Product datasheet for **TA338053**

PPIL1 Rabbit Polyclonal Antibody

Product data:

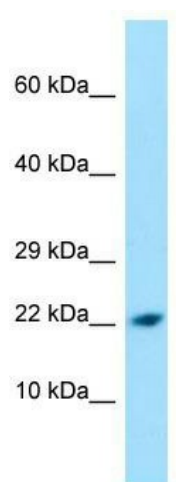
Product Type:	Primary Antibodies
Applications:	WB
Recommended Dilution:	WB
Reactivity:	Human
Host:	Rabbit
Isotype:	IgG
Clonality:	Polyclonal
Immunogen:	The immunogen for anti-PPIL1 antibody is: synthetic peptide directed towards the N-terminal region of Human PPIL1. Synthetic peptide located within the following region: YWKHAPKTCKNFAELARRGYNGTKFHRIKDFMIQGGDPTGTGRGGASI
Formulation:	Liquid. Purified antibody supplied in 1x PBS buffer with 0.09% (w/v) sodium azide and 2% sucrose. <i>Note that this product is shipped as lyophilized powder to China customers.</i>
Purification:	Affinity Purified
Conjugation:	Unconjugated
Storage:	Store at -20°C as received.
Stability:	Stable for 12 months from date of receipt.
Predicted Protein Size:	18 kDa
Gene Name:	peptidylprolyl isomerase like 1
Database Link:	NP_057143 Entrez Gene 51645 Human Q9Y3C6
Background:	PPIases accelerate the folding of proteins. It catalyzes the cis-trans isomerization of proline imidic peptide bonds in oligopeptides. PPIL1 may be involved in pre-mRNA splicing.
Synonyms:	CGI-124; CYPL1; hCyPX; PPIase
Note:	Immunogen Sequence Homology: Dog: 100%; Pig: 100%; Rat: 100%; Goat: 100%; Horse: 100%; Human: 100%; Mouse: 100%; Bovine: 100%; Rabbit: 100%; Zebrafish: 100%; Guinea pig: 100%; Yeast: 93%



[View online »](#)

Protein Pathways: Spliceosome

Product images:



WB Suggested Anti-PPIL1 Antibody; Titration: 1.0 ug/ml; Positive Control: A549 Whole Cell