

Product datasheet for **TA338050**

CED6 (GULP1) Rabbit Polyclonal Antibody

Product data:

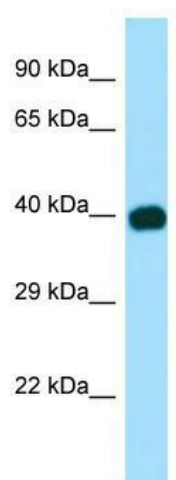
Product Type:	Primary Antibodies
Applications:	WB
Recommended Dilution:	WB
Reactivity:	Human
Host:	Rabbit
Isotype:	IgG
Clonality:	Polyclonal
Immunogen:	The immunogen for anti-GULP1 antibody is: synthetic peptide directed towards the N-terminal region of Human GULP1. Synthetic peptide located within the following region: AKFLGSTEVEQPKGTEVVRDAVRKLFARHIKKSEGQKIPKVELQISIYG
Formulation:	Liquid. Purified antibody supplied in 1x PBS buffer with 0.09% (w/v) sodium azide and 2% sucrose. <i>Note that this product is shipped as lyophilized powder to China customers.</i>
Purification:	Affinity Purified
Conjugation:	Unconjugated
Storage:	Store at -20°C as received.
Stability:	Stable for 12 months from date of receipt.
Predicted Protein Size:	34 kDa
Gene Name:	GULP, engulfment adaptor PTB domain containing 1
Database Link:	NP_057399 Entrez Gene 51454 Human Q9UBP9
Background:	The protein encoded by this gene is an adapter protein necessary for the engulfment of apoptotic cells by phagocytes. Several transcript variants, some protein coding and some thought not to be protein coding, have been found for this gene.
Synonyms:	CED-6; CED6; GULP
Note:	Immunogen Sequence Homology: Dog: 100%; Pig: 100%; Rat: 100%; Horse: 100%; Human: 100%; Mouse: 100%; Bovine: 100%; Rabbit: 100%; Guinea pig: 93%; Zebrafish: 86%



[View online »](#)

Protein Families: Druggable Genome

Product images:



WB Suggested Anti-GULP1 Antibody; Titration: 1.0 ug/ml; Positive Control: Fetal Brain