

Product datasheet for **TA338049**

EPLIN (LIMA1) Rabbit Polyclonal Antibody

Product data:

Product Type:	Primary Antibodies
Applications:	WB
Recommended Dilution:	WB
Reactivity:	Human
Host:	Rabbit
Isotype:	IgG
Clonality:	Polyclonal
Immunogen:	The immunogen for anti-LIMA1 antibody: synthetic peptide directed towards the N terminal of human LIMA1. Synthetic peptide located within the following region: PHIKDGEDLKDHDSTESKKMENCLGESRHEVEKSEISENTDASGKIEKYNV
Formulation:	Liquid. Purified antibody supplied in 1x PBS buffer with 0.09% (w/v) sodium azide and 2% sucrose. <i>Note that this product is shipped as lyophilized powder to China customers.</i>
Purification:	Affinity Purified
Conjugation:	Unconjugated
Storage:	Store at -20°C as received.
Stability:	Stable for 12 months from date of receipt.
Predicted Protein Size:	85 kDa
Gene Name:	LIM domain and actin binding 1
Database Link:	NP_057441 Entrez Gene 51474 Human Q9UHB6
Background:	EPLIN is a cytoskeleton-associated protein that inhibits actin filament depolymerization and cross-links filaments in bundles. EPLIN is a cytoskeleton-associated protein that inhibits actin filament depolymerization and cross-links filaments in bundles (Maul et al., 2003 [PubMed 12566430]). [supplied by OMIM]. Publication Note: This RefSeq record includes a subset of the publications that are available for this gene. Please see the Entrez Gene record to access additional publications.

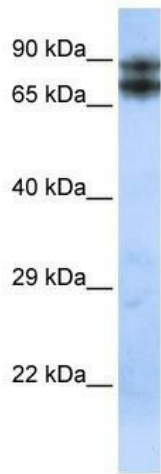


[View online »](#)

Synonyms: EPLIN; SREBP3

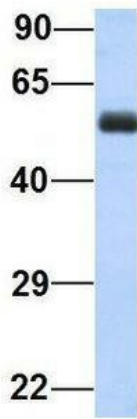
Note: Immunogen Sequence Homology: Human: 100%; Rabbit: 86%; Rat: 79%; Horse: 79%; Mouse: 79%

Product images:



WB Suggested Anti-LIMA1 Antibody Titration: 0.2-1 ug/ml; ELISA Titer: 1:12500; Positive Control: Human Placenta

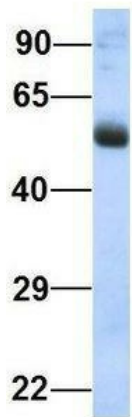
LIMA1



Rabbit Anti-LIMA1
 Sample Type: Human Fetal Heart
 Antibody Concentration: 1ug/mL

Host: Rabbit; Target Name: LIMA1; Sample Tissue: Human Fetal Heart; Antibody Dilution: 1.0 ug/ml

LIMA1



Rabbit Anti-LIMA1
Sample Type: Human Fetal Lung
Antibody Concentration: 1ug/mL

Host: Rabbit; Target Name: LIMA1; Sample
Tissue: Human Fetal Lung; Antibody Dilution: 1.0
ug/ml