

## Product datasheet for **TA338048**

### CRIM1 Rabbit Polyclonal Antibody

#### Product data:

Product Type:	Primary Antibodies
Applications:	WB
Recommended Dilution:	WB
Reactivity:	Human
Host:	Rabbit
Isotype:	IgG
Clonality:	Polyclonal
Immunogen:	The immunogen for anti-CRIM1 antibody is: synthetic peptide directed towards the C-terminal region of Human CRIM1. Synthetic peptide located within the following region: NQKKQWIPLLCWYRTPKPSLNNQLVSDCKKGTRVQVDSSQRMLRAE
Formulation:	Liquid. Purified antibody supplied in 1x PBS buffer with 0.09% (w/v) sodium azide and 2% sucrose. <i>Note that this product is shipped as lyophilized powder to China customers.</i>
Purification:	Affinity Purified
Conjugation:	Unconjugated
Storage:	Store at -20°C as received.
Stability:	Stable for 12 months from date of receipt.
Predicted Protein Size:	110 kDa
Gene Name:	cysteine rich transmembrane BMP regulator 1 (chordin-like)
Database Link:	<a href="#">NP_057525</a> <a href="#">Entrez Gene 51232 Human</a> <a href="#">Q9NZV1</a>
Background:	This gene encodes a transmembrane protein containing six cysteine-rich repeat domains and an insulin-like growth factor-binding domain. The encoded protein may play a role in tissue development through interactions with members of the transforming growth factor beta family, such as bone morphogenetic proteins.
Synonyms:	CRIM-1; S52

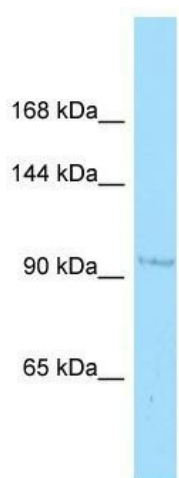


[View online »](#)

**Note:** Immunogen Sequence Homology: Pig: 100%; Rat: 100%; Horse: 100%; Human: 100%; Mouse: 100%; Bovine: 100%; Guinea pig: 100%; Rabbit: 93%; Dog: 86%; Zebrafish: 85%

**Protein Families:** Druggable Genome, Secreted Protein, Transmembrane

**Product images:**



WB Suggested Anti-CRIM1 Antibody; Titration: 1.0 ug/ml; Positive Control: Jurkat Whole Cell