

Product datasheet for **TA338047**

LGSN Rabbit Polyclonal Antibody

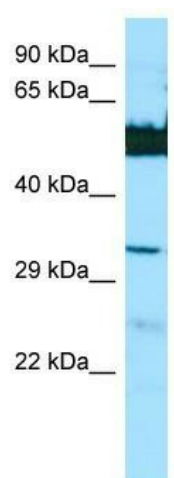
Product data:

Product Type:	Primary Antibodies
Applications:	WB
Recommended Dilution:	WB
Reactivity:	Human
Host:	Rabbit
Isotype:	IgG
Clonality:	Polyclonal
Immunogen:	The immunogen for anti-LGSN antibody is: synthetic peptide directed towards the N-terminal region of Human LGSN. Synthetic peptide located within the following region: QEDSTRDEGNETEANSMTLRTRKVKVTKPYVCSTEVGETDMSNSNDCMR
Formulation:	Liquid. Purified antibody supplied in 1x PBS buffer with 0.09% (w/v) sodium azide and 2% sucrose. <i>Note that this product is shipped as lyophilized powder to China customers.</i>
Purification:	Affinity Purified
Conjugation:	Unconjugated
Storage:	Store at -20°C as received.
Stability:	Stable for 12 months from date of receipt.
Predicted Protein Size:	57 kDa
Gene Name:	lengsin, lens protein with glutamine synthetase domain
Database Link:	NP_057655 Entrez Gene 51557 Human Q5TDP6
Background:	This gene encodes a protein with similarity to the GS I members of the glutamine synthetase superfamily. The encoded protein is referred to as a pseudo-glutamine synthetase because it has no glutamine synthesis activity and may function as a chaperone protein. This protein is localized to the lens and may be associated with cataract disease.
Synonyms:	GLULD1; LGS
Note:	Immunogen Sequence Homology: Dog: 100%; Human: 100%; Bovine: 85%; Rabbit: 79%



[View online »](#)

Product images:



WB Suggested Anti-LGSN Antibody; Titration: 1.0 ug/ml; Positive Control: HepG2 Whole Cell