

Product datasheet for **TA338046**

GMIP Rabbit Polyclonal Antibody

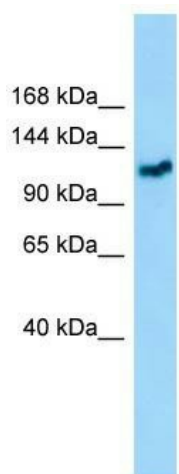
Product data:

Product Type:	Primary Antibodies
Applications:	WB
Recommended Dilution:	WB
Reactivity:	Human
Host:	Rabbit
Isotype:	IgG
Clonality:	Polyclonal
Immunogen:	The immunogen for anti-GMIP antibody is: synthetic peptide directed towards the C-terminal region of Human GMIP. Synthetic peptide located within the following region: PGPDPQHHSTLEQHPTATPTEIPTQSDQREDVAEDTKDGGGEVSSQGPE
Formulation:	Liquid. Purified antibody supplied in 1x PBS buffer with 0.09% (w/v) sodium azide and 2% sucrose.
Purification:	Affinity Purified
Conjugation:	Unconjugated
Storage:	Store at -20°C as received.
Stability:	Stable for 12 months from date of receipt.
Predicted Protein Size:	107 kDa
Gene Name:	GEM interacting protein
Database Link:	NP_057657 Entrez Gene 51291 Human Q9P107
Background:	This gene encodes a member of the ARHGAP family of Rho/Rac/Cdc42-like GTPase activating proteins. The encoded protein interacts with the Ras-related protein Gem through its N-terminal domain. Separately, it interacts with RhoA through a RhoGAP domain, and stimulates RhoA-dependent GTPase activity. Alternatively spliced variants that encode different protein isoforms have been described but their full-length nature has not been determined.
Synonyms:	ARHGAP46
Note:	Immunogen Sequence Homology: Human: 100%; Horse: 93%; Dog: 86%; Rabbit: 85%


[View online »](#)

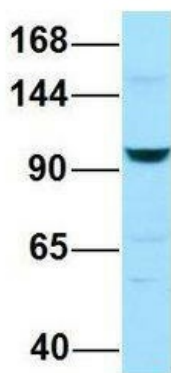
Protein Families: Druggable Genome

Product images:



WB Suggested Anti-GMIP Antibody; Titration: 1.0 ug/ml; Positive Control: COLO205 Whole Cell

GMIP



Rabbit Anti-GMIP
Sample Type: Human 721_B
Antibody Concentration: 1ug/mL

Host: Rabbit; Target Name: GMIP; Sample Tissue: Human 721_B; Antibody Dilution: 1.0 ug/ml GMIP is supported by BioGPS gene expression data to be expressed in 721_B