

Product datasheet for **TA338045**

HP1 gamma (CBX3) Rabbit Polyclonal Antibody

Product data:

Product Type:	Primary Antibodies
Applications:	IHC, WB
Recommended Dilution:	WB, IHC
Reactivity:	Human
Host:	Rabbit
Isotype:	IgG
Clonality:	Polyclonal
Immunogen:	The immunogen for anti-CBX3 antibody: synthetic peptide directed towards the middle region of human CBX3. Synthetic peptide located within the following region: ELIEAFLNSQKAGKEKDGTKRKSLDSESDSKSKKRDAADKPRGFARG
Formulation:	Liquid. Purified antibody supplied in 1x PBS buffer with 0.09% (w/v) sodium azide and 2% sucrose. <i>Note that this product is shipped as lyophilized powder to China customers.</i>
Purification:	Protein A purified
Conjugation:	Unconjugated
Storage:	Store at -20°C as received.
Stability:	Stable for 12 months from date of receipt.
Predicted Protein Size:	21 kDa
Gene Name:	chromobox 3
Database Link:	NP_057671 Entrez Gene 11335 Human Q13185



[View online »](#)

Background:

At the nuclear envelope, the nuclear lamina and heterochromatin are adjacent to the inner nuclear membrane. CBX3 binds DNA and is a component of heterochromatin. CBX3 also can bind lamin B receptor, an integral membrane protein found in the inner nuclear membrane. The dual binding functions of CBX3 may explain the association of heterochromatin with the inner nuclear membrane. At the nuclear envelope, the nuclear lamina and heterochromatin are adjacent to the inner nuclear membrane. The protein encoded by this gene binds DNA and is a component of heterochromatin. This protein also can bind lamin B receptor, an integral membrane protein found in the inner nuclear membrane. The dual binding functions of the encoded protein may explain the association of heterochromatin with the inner nuclear membrane. Two transcript variants encoding the same protein but differing in the 5' UTR, have been found for this gene. At the nuclear envelope, the nuclear lamina and heterochromatin are adjacent to the inner nuclear membrane. The protein encoded by this gene binds DNA and is a component of heterochromatin. This protein also can bind lamin B receptor, an integral membrane protein found in the inner nuclear membrane. The dual binding functions of the encoded protein may explain the association of heterochromatin with the inner nuclear membrane. Two transcript variants encoding the same protein but differing in the 5' UTR, have been found for this gene.

Synonyms:

HECH; HP1-GAMMA; HP1Hs-gamma

Note:

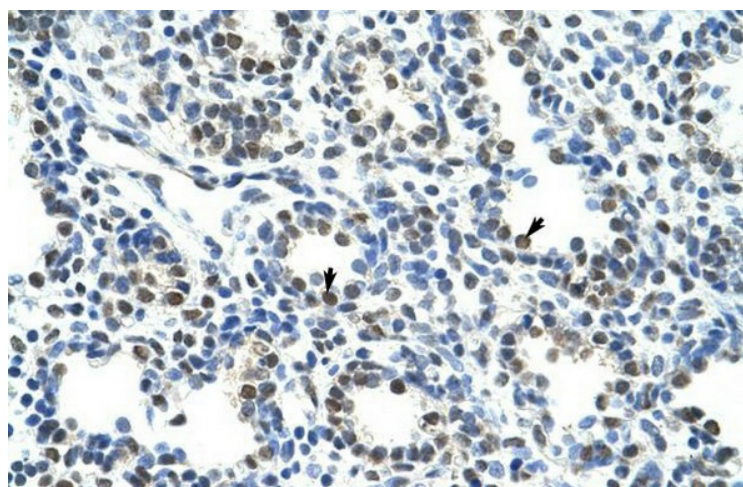
Immunogen Sequence Homology: Dog: 100%; Pig: 100%; Rat: 100%; Horse: 100%; Human: 100%; Mouse: 100%; Bovine: 100%; Rabbit: 100%; Guinea pig: 100%

Protein Families:

Druggable Genome, Transcription Factors

Product images:

WB Suggested Anti-CBX3 Antibody Titration: 1.25 ug/ml; Positive Control: Jurkat cell lysate CBX3 is strongly supported by BioGPS gene expression data to be expressed in Human Jurkat cells



Human Lung