

## Product datasheet for **TA338043**

### SPG21 Rabbit Polyclonal Antibody

#### Product data:

Product Type:	Primary Antibodies
Applications:	WB
Recommended Dilution:	WB
Reactivity:	Human
Host:	Rabbit
Isotype:	IgG
Clonality:	Polyclonal
Immunogen:	The immunogen for anti-SPG21 antibody is: synthetic peptide directed towards the C-terminal region of Human SPG21. Synthetic peptide located within the following region: LCRSAEVNLYVQIHLLQFHGTYAAIDPSMVSAEELEVQKGSGLGISQEEQ
Formulation:	Liquid. Purified antibody supplied in 1x PBS buffer with 0.09% (w/v) sodium azide and 2% sucrose. <i>Note that this product is shipped as lyophilized powder to China customers.</i>
Purification:	Affinity Purified
Conjugation:	Unconjugated
Storage:	Store at -20°C as received.
Stability:	Stable for 12 months from date of receipt.
Predicted Protein Size:	35 kDa
Gene Name:	spastic paraplegia 21 (autosomal recessive, Mast syndrome)
Database Link:	<a href="#">NP_057714</a> <a href="#">Entrez Gene 51324 Human</a> <a href="#">Q9NZD8</a>
Background:	The protein encoded by this gene was identified by a two-hybrid screen using CD4 as the bait. It binds to the hydrophobic C-terminal amino acids of CD4 which are involved in repression of T cell activation. The interaction with CD4 is mediated by the noncatalytic alpha/beta hydrolase fold domain of this protein. It is thus proposed that this gene product modulates the stimulatory activity of CD4. At least three different transcript variants encoding two different isoforms have been found for this gene.

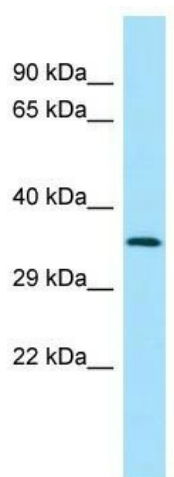


[View online »](#)

**Synonyms:** ACP33; BM-019; GL010; MAST

**Note:** Immunogen Sequence Homology: Human: 100%; Bovine: 100%; Dog: 93%; Pig: 93%; Sheep: 93%; Rat: 86%; Horse: 86%; Mouse: 86%; Guinea pig: 86%; Rabbit: 79%

**Product images:**



WB Suggested Anti-SPG21 Antibody; Titration: 1.0 ug/ml; Positive Control: 721\_B Whole Cell SPG21 is supported by BioGPS gene expression data to be expressed in 721\_B