

Product datasheet for TA338042

DSU (MREG) Rabbit Polyclonal Antibody

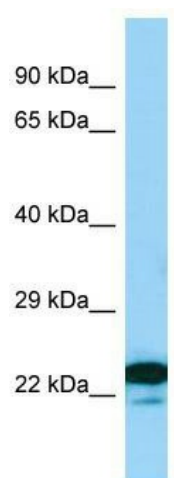
Product data:

| | |
|-------------------------|---|
| Product Type: | Primary Antibodies |
| Applications: | WB |
| Recommended Dilution: | WB |
| Reactivity: | Human |
| Host: | Rabbit |
| Isotype: | IgG |
| Clonality: | Polyclonal |
| Immunogen: | The immunogen for anti-MREG antibody is: synthetic peptide directed towards the C-terminal region of Human MREG. Synthetic peptide located within the following region: DSLLSVTKLSTISDSKNTRKAREMLLKLAEETNIFPTSWELSERYLFVVD |
| Formulation: | Liquid. Purified antibody supplied in 1x PBS buffer with 0.09% (w/v) sodium azide and 2% sucrose. |
| Purification: | Affinity Purified |
| Conjugation: | Unconjugated |
| Storage: | Store at -20°C as received. |
| Stability: | Stable for 12 months from date of receipt. |
| Predicted Protein Size: | 25 kDa |
| Gene Name: | melanoregulin |
| Database Link: | NP_060470 Entrez Gene 55686 Human Q8N565 |
| Background: | MREG plays a role in the incorporation of pigments into hair. MREG may function in membrane fusion and regulate the biogenesis of disk membranes of photoreceptor rod cells. |
| Synonyms: | DSU; WDT2 |
| Note: | Immunogen Sequence Homology: Dog: 100%; Rat: 100%; Horse: 100%; Human: 100%; Bovine: 100%; Pig: 93%; Mouse: 93%; Rabbit: 93%; Guinea pig: 93% |



[View online »](#)

Product images:



WB Suggested Anti-MREG Antibody; Titration: 1.0 ug/ml; Positive Control: Jurkat Whole Cell