

Product datasheet for **TA338041**

NLE1 Rabbit Polyclonal Antibody

Product data:

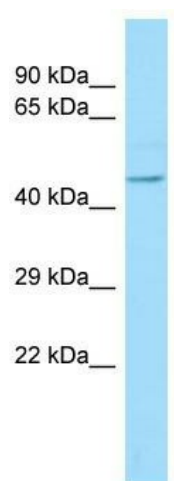
Product Type:	Primary Antibodies
Applications:	WB
Recommended Dilution:	WB
Reactivity:	Human
Host:	Rabbit
Isotype:	IgG
Clonality:	Polyclonal
Immunogen:	The immunogen for anti-NLE1 antibody is: synthetic peptide directed towards the C-terminal region of Human NLE1. Synthetic peptide located within the following region: DSTLKVWDVKAQKLAMDLPGHADVEYAVDWSPDGQRVASGGKDKCLRIWR
Formulation:	Liquid. Purified antibody supplied in 1x PBS buffer with 0.09% (w/v) sodium azide and 2% sucrose. <i>Note that this product is shipped as lyophilized powder to China customers.</i>
Purification:	Affinity Purified
Conjugation:	Unconjugated
Storage:	Store at -20°C as received.
Stability:	Stable for 12 months from date of receipt.
Predicted Protein Size:	53 kDa
Gene Name:	notchless homolog 1
Database Link:	NP_060566 Entrez Gene 54475 Human Q9NVX2
Background:	The function of this protein remains unknown.
Synonyms:	Nle
Note:	Immunogen Sequence Homology: Dog: 100%; Pig: 100%; Rat: 100%; Horse: 100%; Human: 100%; Mouse: 100%; Bovine: 100%; Rabbit: 100%; Zebrafish: 100%; Guinea pig: 100%; Yeast: 91%



[View online »](#)

Protein Families: Druggable Genome, Stem cell - Pluripotency

Product images:



WB Suggested Anti-NLE1 Antibody; Titration: 1.0 ug/ml; Positive Control: Fetal Brain