

Product datasheet for **TA338039**

MOBK1B (MOB1A) Rabbit Polyclonal Antibody

Product data:

Product Type:	Primary Antibodies
Applications:	WB
Recommended Dilution:	WB
Reactivity:	Human
Host:	Rabbit
Isotype:	IgG
Clonality:	Polyclonal
Immunogen:	The immunogen for anti-MOB1A antibody is: synthetic peptide directed towards the C-terminal region of Human MOB1A. Synthetic peptide located within the following region: FDSVMQLQEEAHLNTSFKHFIFFVQEFNLIDRRELAPLQELIEKLGSKDR
Formulation:	Liquid. Purified antibody supplied in 1x PBS buffer with 0.09% (w/v) sodium azide and 2% sucrose. <i>Note that this product is shipped as lyophilized powder to China customers.</i>
Purification:	Affinity Purified
Conjugation:	Unconjugated
Storage:	Store at -20°C as received.
Stability:	Stable for 12 months from date of receipt.
Predicted Protein Size:	25 kDa
Gene Name:	MOB kinase activator 1A
Database Link:	NP_060691 Entrez Gene 55233 Human Q9H8S9



[View online »](#)

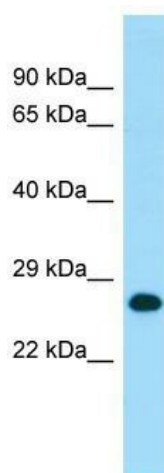
Background: MOB1A is an activator of LATS1/2 in the Hippo signaling pathway which plays a pivotal role in organ size control and tumor suppression by restricting proliferation and promoting apoptosis. The core of this pathway is composed of a kinase cascade wherein STK3/MST2 and STK4/MST1, in complex with its regulatory protein SAV1, phosphorylates and activates LATS1/2 in complex with its regulatory protein MOB1, which in turn phosphorylates and inactivates YAP1 oncoprotein and WWTR1/TAZ. Phosphorylation of YAP1 by LATS1/2 inhibits its translocation into the nucleus to regulate cellular genes important for cell proliferation, cell death, and cell migration. MOB1A stimulates the kinase activity of STK38 and STK38L. MOB1A acts cooperatively with STK3/MST2 to activate STK38.

Synonyms: C2orf6; MATS1; MOB1; Mob4B; MOBK1B; MOBKL1B

Note: Immunogen Sequence Homology: Dog: 100%; Pig: 100%; Rat: 100%; Horse: 100%; Human: 100%; Mouse: 100%; Bovine: 100%; Rabbit: 100%; Guinea pig: 100%; Zebrafish: 93%

Protein Families: Druggable Genome

Product images:



WB Suggested Anti-MOB1A Antibody; Titration: 1.0 ug/ml; Positive Control: Fetal Heart